



# Heavy Duty Wheels & Castors

**colson**

*Colson Europe B.V.*

### Rolling Resistance

Rolling resistance determines the effort necessary to move the equipment from rest and to keep it rolling. If a wheel, so hard that it will not flatten under load, rolls on an absolutely flat hard surface, perfect rolling is possible. The nearer you get to this ideal, the lower the rolling resistance becomes.

In view of this, the first choice should be hard tread wheels but the average floor is far from smooth and clean and is often littered with small particles of some description.

Once the wheels are rolling they will pass over these small items with no problem, but if the equipment starts from rest with minor obstructions, such as swarf, in front of the wheels then the starting effort includes that necessary to lift the equipment to the height of the obstructions. In cases where hard wheels are used on soft floors such as carpeting, or even asphalt, the surface deformation causes the wheels to sit in small ruts and extra effort is needed to overcome such resistance. Resilient wheels move more easily over obstructions as they deform and roll over them instead of climbing. On the other hand, as a tyre flattens under load, an area instead of a line is always in contact with the floor and resistance to rolling is greater.

Individual characteristics of our wheels will be found elsewhere in this catalogue but, because of the wide variations in floor conditions, hardnesses, wheel diameters, tread profiles, etc., it is not practical to give rolling resistance figures in the tables. We will always be pleased to advise when given the necessary information, but the only accurate assessment is one based on the user making his own tests on site.

### Load Capacities

We do not give load capacities for 'ideal working conditions' as these rarely exist. Capacities given in this catalogue are based on normal working conditions on reasonably level floors free from grooves, breaks, door sills, lift entrances and other hazards. They are also based on a maximum speed of 4km/h unless otherwise stated.

Although Colson Wheels and Castors have high capacity reserves, we recommend the use of the following formula to determine the load capacity:

$$\frac{\text{weight of transport equipment} + \text{load}}{\text{three}}$$

For uneven floors, this should be divided by three as, often, only three wheels have contact with the floor on a 4-wheel trolley.

### Castor and Wheel Lubrication

We recommend regular greasing of all nipples with a lithium based grease of the type used on car axles. Where nipples are not provided a few drops of light machine oil should be used.

### Finish

The standard finish for pressed steel castors is bright zinc electro-plating to BS1706. Wheels and fabricated castors are paint sprayed to a high finish. Other finishes can be supplied to special order, subject to economical batches.

### Castor and Wheel Selection

The following factors all have a bearing on which wheel or castor is suitable for a particular application, including the performance to be expected.

### Loading

Apart from the gross weight of the load and equipment, an allowance should be made for uneven distribution of weight as this often results in one wheel carrying more than the rest. Mechanical towing can also impose severe shock loading.

### Floor conditions

Rough uneven floors often go unnoticed but they cause severe overloading in some cases simply because one wheel leaves the ground and the load is thrust upon the remainder. Impact loads due to kerbs and holes in the floor also cause problems.

### Motive power

If a truck moved by hand meets an obstruction, it becomes harder to push and the truck slows down, takes an easier route, or the load is reduced. All these reduce the strain on the castors as well as the person pushing. This does not happen with mechanical towing as there is usually plenty of power in hand; This, combined with higher speed, results in considerably more castor stress.

All pressed steel castors are designed specifically for manual propulsion. As power towing of castors places increased stresses on various components, these castors are not recommended for this application. Fabricated castors have much higher load capacities, making them suitable for power towing. The P, X, Y and Z castors are specifically designed for power towing, but must be fitted to wheels with Ball Journal or Taper Roller bearings only. Obstructions such as kerbs and gullies and even relatively small steps, can exert enormous impact loads which can damage a castor. Steps such as lift sills, drain covers and joints in concrete slabs, present a particular problem if they are not approached squarely. Approaching such obstacles obliquely makes the castor turn at right angles to the obstruction instead of turning in such a way that it can climb over it, this damages the castor. Towing trailers in train increases the problem as only one castor may have to withstand the force generated by the mass of the whole train including the tractor.

As power towing becomes more common it is often desirable to tow a number of trucks or trailers one behind another. Traditional turntable axles are often used, but are expensive and give two disadvantages.



1. If the turntable is at right angles to the axis of the trucks the stability is dramatically reduced.
2. There is a risk of jack-knifing if the trailers stop on a sharp corner.

Because of this, castors are becoming increasingly popular for this application. They work satisfactorily in these conditions providing suitable precautions are taken. 'Cutting-in' must be avoided, as this prevents the use of truck trains in narrow gangways. If trucks are rigidly coupled together with pin couplings at each end, they will follow the track most accurately if the distance from the fixed castor centre line to the rear coupling pin is 25-33% of the total length of the truck from front to rear coupling pins.

This can be achieved by moving the fixed castors forward. However, this reduces the truck's wheelbase and causes the total weight to be shared unevenly between the swivel and rear fixed castors. Therefore, it is advisable to extend the drawbar at the rear of the truck.

### Floor Saving

All metal wheels will damage floors if the load is heavy. Resilient wheels are not so easy to move but they are certainly kinder to floors. It should be remembered that the floor will cost more to repair than the price of the wheel running on it.

### Directional Locks

We supply directional locks across the range of heavy duty castors to fix the swivel for straight line travel. Depending on the model there are 2, 4 or 8 way D-locks.

### Floor Locks

Designed to steady the equipment to which they are fitted and stop horizontal movement, floor locks are never intended to act as a jack. Any attempt to vary the fitting height from the catalogue specification will give failure and/or damage. There is some built-in resilience in the foot pad, which will allow some variations in floor level. Nonetheless it is essential that the floor lock is fitted as closely as possible to one of the swivel castors. Please note that the floor lock can be severely damaged if the linkage is operated whilst the trolley is moving.

### Special Applications

Castors and wheels are usually fitted to equipment that is used intermittently and is often stationary for much of the time. Colson products are specifically designed to operate well under such conditions.

For castors and wheels on applications such as conveyors which are run continuously, the normal load capacities do not apply as a life factor has to be introduced. Each case should be considered individually and we will be pleased to advise on this on receipt of the relevant information.

### Health And Safety at work - 1974

We endeavour to ensure that all its products are safe and without risk to health when they are adequately maintained and properly used according to the recommendations in this catalogue. Specific guidance is given in the notes on this page and elsewhere in this catalogue, where appropriate. We will always be pleased to advise on any application put before us.

## Castors

### Definitions and Uses - Swivel Castors

In swivel castors, the wheel and fork can rotate through a full 360 degrees, whilst the top or mounting plate remains in a fixed position. The horizontal distance between the centreline of the swivel and the centreline of the wheel is called the offset. When pressure is applied through the mounting plate, the offset causes the castor to swivel in line so that the wheel always trails in the opposite direction to the way in which the equipment is being moved.

### Swivel Radius

Our tables give the swivel radius dimension for all swivel castors. This shows the mounting clearance required to allow the castor to swivel without obstruction.

### Fixed Castors

Fixed castors have the top plate rigidly fastened to the fork legs with the wheel in line with the fixing bolt holes. These castors do not swivel at all and the wheel can only move in two directions, forwards and backwards.

### Swivel Head Seals

Swivel head seals are fitted as standard to scaffold castors and all 5,H,P,X,Y and Z series castors. They are optional on the 3 and 4 series.

### Adjustment of tapered roller bearings

All castor bearings are correctly adjusted when the castor is built and should require no attention other than greasing, and then only when they are subjected to particularly arduous conditions.

### Castor Combinations

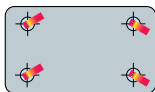
#### 2 Swivel Castors and 2 Fixed Castors



Providing good load capacity and manoeuvrability, this combination ensures accurate steering, even on long straight runs, making it the most practical combination for industrial use. Any trolley with this castor combination should be pushed with the fixed castors leading.

$$\text{Maximum capacity for each wheel} = \frac{\text{load}}{3}$$

#### 4 Swivel Castors



As this combination gives good load capacity with exceptional manoeuvrability, it is suitable for winding runs and where sideways

action is required. It is not recommended for straight runs or ramps, as it may be hard to guide, especially over bumpy terrain and when heavily loaded. However, equipping two castors with directional locks makes this arrangement very versatile and suitable for long straight runs.

$$\text{Maximum capacity for each wheel} = \frac{\text{load}}{3}$$

#### 1 Swivel Castor and 2 Fixed Castors

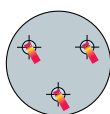


This combination provides an economical solution for lightly loaded trolleys requiring good manoeuvrability. The trolley must be

reasonably small in size and any load must be evenly distributed to ensure stability.

$$\text{Maximum Capacity for each wheel} = \frac{\text{load}}{2.5}$$

#### 3 Swivel Castors



This provides good load capacity with excellent manoeuvrability. However, equipment with this arrangement will be difficult to guide on straight runs particularly over uneven ground.

This arrangement is ideal for barrel dollies and small portable machines.

$$\text{Maximum capacity for each wheel} = \frac{\text{load}}{2.5}$$

#### 4 Swivel Castors and 2 Fixed Castors



##### Centrally Pivoting

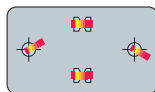
This combination provides an extremely high load capacity, with great manoeuvrability and stability.

This is ideal for very long trolleys designed to carry heavy loads - the fixed castors can be replaced by wheels mounted onto a central axle. The unit's base must be robust and the swivel castors are mounted to allow the trolley to pivot on the central wheels. Therefore, 25mm of packing is required above the two fixed castors (wheels) to give alternating load support, depending on which pair of wheels is in contact with the floor. The entire load rests on 2 central, fixed castors/wheels.

Please note that the swivel castors are subjected to shock loads if the trolley is tipped or the load is not evenly distributed.

$$\text{Maximum capacity for each wheel} = \frac{\text{load}}{2}$$

#### 2 Swivel Castors and 2 Fixed Castors



##### Centrally Pivoting

Ideal for confined spaces, this configuration provides good load capacity with excellent

manoeuvrability. The fixed castors can be replaced by wheels which pivot the trolley centrally. In this case, 25mm of the packing is necessary above the two fixed castors (wheels) to give alternating load support. However, if the trolley is tipped or the load is not evenly distributed, the swivel castors are subjected to shock loads.

The entire load rests on the 2 central, fixed castors/wheels.

$$\text{Maximum capacity for each wheel} = \frac{\text{load}}{2}$$

## Wheels

### Wheels for applications other than castors

All Colson castor wheels are designed to have the axle supported at both ends, i.e. in a castor fork.

An axle supported at only one end (i.e. as a cantilever) will have insufficient diameter to resist the bending moment at the full load rating. If cantilever axles are specified by the customer, it must be his/her responsibility to choose a lower wheel rating, taking account of the working conditions and the safe stress limit for the material from which the axle is made.

### Chemical resistance of wheels

The extensive range of our wheels have resistance to certain chemicals and oils. Please contact us for further information, if you have any queries.

### Standards and Codes

BS.EN. ISO9000 Quality management and systems  
ISO 2163 Industrial Trucks - Wheels and castors Vocabulary.

ISO 2175 Industry wheels for non-powered equipment - Dimensions and load capacities.

ISO 2184 Industrial castors - Dimensions of top plates - Part 1: Oblong top plates with 4 bolt holes.

ISO 3101 Wheels and castors - Triangular top plates with three fixing holes.

ISO 3102 Wheels and castors for non-powered equipment - Off-set for swivel castors.

BS.EN 12526 Vocabulary

BS.EN 12527 Castors and wheels - test methods

BS.EN 12530 Institutional castors

BS.EN 12532 Industrial castors - up to 4Km/h

BS.EN 12533 Heavy duty castors - over 4Km/h up to 16Km/h



# CI series

Cast iron

**Standard finish:** Clear lacquer  
**Effective temperature range:** Most extremes, dependant upon bearing choice, please ask for details

**Wheel Characteristics**  
 Cast iron wheels combine strength and shock resistance with long life and economy. They have a very low tractive resistance and are a first choice where ease of movement is required.

Being metallic, they will withstand extremes of temperature that would destroy plastic or tired wheels.

Revvo only supply heavy close grained castings of grey iron material sometimes described as 'semi-steel'. Our standard material specification is to BS EN 1561

Cast iron wheels, however, can cause floor wear and noise. Although painted, like all ferrous metals, they will eventually rust.

Cast iron is a good and economical choice as a basic wheel for use primarily where rough service conditions prevail.



	1	2	3	4	5	6	7	8
	A	B	C	D		Bd	Catalogue reference	
2 1/2"	63	25	30	10	130		063 CI03	0.28
3"	75	25	30	10	135		075 CI03	0.38
		34	45	12	190		075 CI04	0.59
4"		34	45	12	190		075 CI14	0.76
	100	38	45	12	250		100 CI04	0.87
		38	45	12	250		100 CI14	1.02
		45	60	20	320		100 CI0G	1.65
5"		45	60	20	320		100 CI1H	1.68
		45	60	20	320		100 CI2H	1.69
	125	45	49	20	320		125 CI04	1.23
		38	45	12	500		125 CI14	1.42
		38	45	12	295		125 CI0G	1.71
6"		45	60	20	630		125 CI1H	1.25
		45	60	20	630		125 CI2H	2.04
		45	60	20	630		125 CI05	2.13
	150	45	49	20	1000		150 CI05	2.13
		45	60	20	1000		150 CI1A	2.61
8"		45	60	20	1000		150 CI2H	2.54
		45	49	20	1000		150 CI1A	3.47
		45	60	25	1000		200 CI05	3.23
	200	45	60	20	730		200 CI15	4.13
		45	60	20	1150		200 CI1A	4.93
10"		45	60	25	1150		200 CI2H	4.13
		45	49	20	1150		200 CIPT	8.00
		63	70	38.1	2270		250 CI1H	7.00
	250	54	60	25	1240		250 CI2H	7.20
		54	57	25	1240		250 CIPT	10.00
	63	70	38.1	2270				

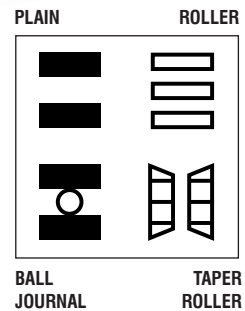


TEL +44 (0)1202 484211 FAX +44 (0) 1202 477896



19

- 1 WHEEL DIAMETER INCH/MM
- 2 TREAD WIDTH MM
- 3 HUB WIDTH MM
- 4 BEARING BORE MM
- 5 LOAD CAPACITY KG
- 6 BEARING TYPE
- 7 CATALOGUE REF
- 8 ACTUAL WEIGHT OF CASTOR FOR SHIPPING PURPOSE KG



**Please Note**

- All specifications and recommendations are given to the best of our knowledge and ability. No liability is accepted for their application.
- Specifications (by dimension, description, illustration or otherwise) are approximate and are liable to change without notice especially with regard to developments and improvements.

- Since load capacity ratings are only general recommendations they can be subject to wide variations under different working conditions.
  - Listing of goods does not necessarily imply that they are 'ex-stock' nor we accept any obligation to supply them.
- (For conditions of sale see price list.)

## Contents

### Section one Wheels

NY/CN series	Nylon	6
NT series	Nythane	7
RU series	Rubber Tyred and variants	8
AS/EC series	Rubber Tyred and variants	9
CP/CU series	Cushion Tyred Rubber	10
GR/DR/DW series	Green Rubber and Demountable Rubber	11
PT series	Revvothane and Vulkollan	12
PT Designer range	Vulkollan	13
NY/PT series	Rollers	14
CI series	Cast Iron	15
ST/FT series	Steel and Unflanged Steel	16
DF series	Double Flange Steel	17
WA/SF series	Wheel and Axle Assembly and Single Flange Steel	18
CV/CF series	V-Grooved and Flanged	19

### Section two Pressed Steel Castors

1 and 2 series	Light duty castors up to 75kg	20
3 series	Light-medium duty castors up to 125kg	22
4 series	Light-medium duty castors up to 265kg	24
5 series	Medium Duty castors up to 1000kg	26
E series	Light-medium duty castors up to 320kg	28
SS4-SS5	Scaffold castors	30
SJE	Scaffold castors	31
SSD series	Scaffold castors	32
2SL series	Low Level castors	33

### Section three Fabricated Steel Castors

G series	up to 450kg	35
K series	up to 1000kg	36
H series	up to 1500kg	37
P series	up to 2000kg	41
T series	up to 5080kg	44
2ST/2FT series	up to 4675kg	45
X series	up to 2750kg	46
XSX/XFX, XST-XFT	Shear disc castors	47
SSH/SFH	Sprung suspension castors	48
SSX/SFX, SST/2ST	Sprung suspension castors	49
TSY/TFY	up to 6700kg	50
2SZ/2FZ	up to 11,400kg	51

### Section five Miscellaneous

Swivel Heads	52
Scene-shifter castors	53
Floor Locks and Jacking castors	54

### Section six Flexello Castors by Colson

KV/KVF	Heavy duty castors up to 1600kg	55
EH/EHF	Extra heavy duty castors up to 5 tonnes	56
Towtrailers	Up to 8 tonnes	59
JA series	Heavy duty jacking castors up to 2500kg	60
TLCH/TLCM series	Truck locks	60
WRT series	Rubber Tyred wheels	61
WSU series	Superthane-Polyurethane wheels	62
WCI/WGR/WHC	Hard Tread wheels	65

## NY series Nylon

Standard finish: White

Effective temperature range: -20°C to +80°C  
(+5°C to +40°C is preferred)

A	B	C	D			Catalogue reference	
5/8" 40	17	20	8	18		040 NY01	0.015
2" 50	17	20	8	50		050 NY01	0.025
	20	24	8	55		050 NY02	0.026
	14	17	12	80		050 NY0L	0.026
2 1/2" 63	17	20	8	50		063 NY01	0.030
	25	30	10	120		063 NY03	0.048
3" 75	20	24	10	60		075 NY02	0.090
	25	30	10	160		075 NY03	0.073
	35	45	12	160		075 NY04	0.075
	35	45	12	160		075 NY14	0.078
4" 100	20	24	10	75		100 NY02	0.078
	25	30	10	135		100 NY03	0.117
	35	45	12	225		100 NY04	0.147
	35	45	12	225		100 NY14	0.187
	35	60	20	225		100 NY0G	0.236
5" 125	25	30	12	135		125 NY03	0.30
	35	45	12	270		125 NY04	0.21
	35	45	12	270		125 NY14	0.25
	40	60	20	330		125 NY0G	0.80
	40	60	20	330		125 NY1G	0.25
6" 150	45	60	20	500		150 NY05	0.36
	40	60	20	500		150 NY15	0.62
	50	60	20	800		150 NY2H	1.20
	40	60	25.4	500		150 NYRA	1.50
8" 200	50	60	20	500		200 NY05	0.66
	50	60	20	500		200 NY15	0.66
	50	60	20	1000		200 NY0E	1.00
	50	60	25	1500		200 NY2H	1.90
	50	60	25.4	500		200 NYRA	2.00
10" 250	60	60	25	2000		250 NY2H	2.30

### Wheel Characteristics

Nylon wheels have high load capacities, are light in weight, clean and able to be used with the minimum of lubrication. They are virtually non marking and cause very little floor damage. They are resistant to oils, fats, alkalis in general, soaps and detergents.

Nylon wheels should not be used in contact with concentrated acids, although some exposure to dilute acids is possible. Where extreme conditions are involved, tests should be conducted to establish the best choice of wheel.

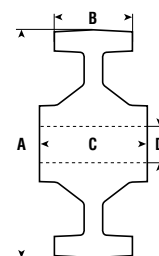
## CN series Cast Nylon

A	B	C	D			Catalogue reference
3/4" 80	40	45	20	1000	650	80-40-CN2-20
4" 100	40	45	20	1250	800	100-40-CN2-20
	55	60	25	1700	1100	100-55-CN2-25
5" 125	55	60	25	2000	1400	125-55-CN2-25
6" 150	55	60	30	2500	1600	150-55-CN2-30
	80	90	30	3000	2400	150-80-CN2-30
8" 200	55	60	35	3000	2200	200-55-CN2-35
	80	90	40	4500	3200	200-80-CN2-40
10" 250	55	60	40	4125	2800	250-55-CN2-40
	80	90	50	6000	4000	250-55-CN2-50

### Cast Nylon Wheel

Natural Cast Nylon is generally accepted as the primary engineering polymer. Cast Nylon 6 is produced by a casting process and compared to injection moulded and extrusion grades of polyamides, stands out with its improved mechanical, thermal and chemical resistance properties.









Specifically cast nylon has a higher tensile compressive and impact strength as well as improved resistance to creep and heat ageing.





# NT series

"Nythane" nylon centre with polyurethane tyre

A	B	C	D			Catalogue reference	
5"125	35	45	12	180		<b>125 NT04</b>	0.36
	45	57	20	250		<b>125 NT0E</b>	0.36
	35	45	12	180		<b>125 NT14</b>	0.36
	45	57	20	250		<b>125 NT2H</b>	0.40
6"150	45	60	20	300		<b>150 NT0E</b>	0.50
	45	57	20	300		<b>150 NT25</b>	0.60
8"200	50	60	20	400		<b>200 NT0E</b>	1.10
	50	57	20	400		<b>200 NT25</b>	1.20



**Standard finish:** Red tyres, white centres

### Wheel Characteristics

Polyurethane tyres moulded to nylon centres. Lightweight, non-marking, corrosion free and hygienic with superior load capacities to comparable rubber tyred wheels.

# RU series

Cast iron centre with rubber tyre

Steel centre - 050 wheel

A	B	C	D			Catalogue reference	
2" 50	19	24	8	41		050 RU02	0.13
2 1/2" 63	25	30	10	70		063 RU03	0.23
3" 75	19	24	10	41		075 RU02	0.24
	25	30	10	70		075 RU03	0.33
	32	45	12	80		075 RU04	0.41
4" 100	19	25	10	43		100 RU02	0.25
	35	45	12	135		100 RU04	0.79
	35	45	12	135		100 RU14	0.79
	38	60	20	150		100 RU1H	1.62
5" 125	38	45	12	160		125 RU04	1.28
	38	45	12	160		125 RU14	1.39
	40	60	20	170		125 RU0G	1.90
	40	60	20	170		125 RU1H	1.50
	40	49	20	170		125 RU2H	2.37
6" 150	45	60	20	370		150 RU05	2.05
	45	60	20	370		150 RU15	2.28
	45	60	25	370		150 RU1A	3.47
	40	49	20	370		150 RU2H	2.01
8" 200	45	50	25	480		200 RU0A	3.37
	50	60	20	535		200 RU05	3.10
	50	60	20	535		200 RU15	3.59
	50	49	20	535		200 RU2H	3.87
	50	60	25	535		200 RU1A	5.44
10" 250	54	57	25	615		250 RU2H	6.82
	54	60	25	615		250 RU1H	6.83
	75	89	19	1020		250 RUTT	8.95
	75	78	25	1020		250 RU2P	9.80
	75	76	30	1020		250 RU2Q	10.20
12" 300	54	57	25	680		300 RU2H	9.41
	54	60	25	680		300 RU1H	9.25
	75	83	31.7	1020		300 RURA	13.69
	75	78	25	1020		300 RU2P	14.00
	75	76	30	1020		300 RU2Q	9.40
14" 350	75	83	31.7	1360		350 RURA	11.00
	75	78	25	1360		350 RU2P	14.00
	75	76	30	1360		350 RU2Q	14.00
16" 400	100	115	25.4	1700		400 RUTT	15.00
	100	115	38.1	1700		400 RUTA	14.00
	100	104	35	1700		400 RU2A	14.00

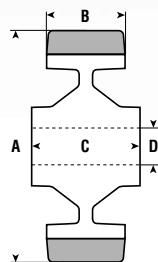
Standard finish: Black

### Wheel Characteristics

The rubber tyres are moulded to cast iron centres under heat and pressure to give a tough, durable bond.

Our RU series wheels have good load capacities combined with silent running and floor saving qualities.

They also have the ability to withstand reasonably rough service conditions.



## AS series

Cast iron centre with antistatic rubber tyre  
Steel centre - 050 wheel

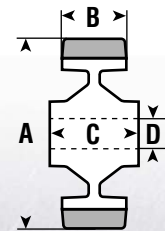
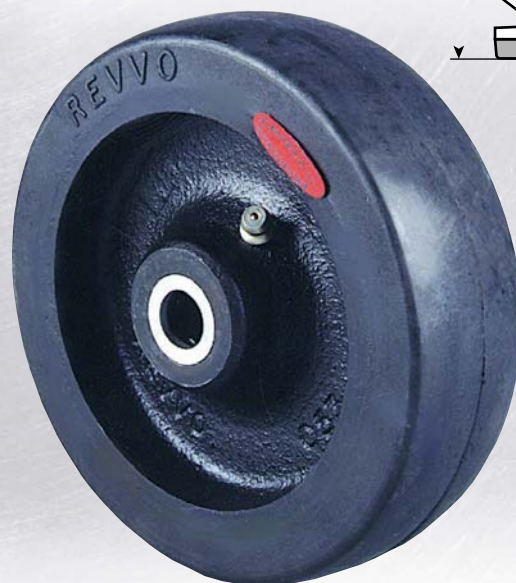
A	B	C	D			Catalogue reference	
2" 50	19	24	8	30	≡	050 AS02	0.12
2½" 63	25	30	10	50	≡	063 AS03	0.22
3" 75	19	24	10	30	≡	075 AS02	0.24
	25	30	10	50	≡	075 AS03	0.33
	32	45	12	60	≡	075 AS04	0.40
4" 100	19	24	10	30	≡	100 AS02	0.25
	35	45	12	100	≡	100 AS04	0.78
5" 125	38	45	12	120	≡	125 AS04	1.27
	38	45	12	120	≡	125 AS14	1.43
6" 150	45	60	20	275	≡	150 AS05	2.05
	45	60	20	275	≡	150 AS15	2.28



## EC series

Cast iron centre with electrically conductive rubber tyre  
Steel centre - 050 wheel

A	B	C	D			Catalogue reference	
2" 50	19	24	8	30	≡	050 EC02	0.12
2½" 63	25	30	10	50	≡	063 EC03	0.22
3" 75	19	24	10	30	≡	075 EC02	0.24
	25	30	10	50	≡	075 EC03	0.33
	32	45	12	60	≡	075 EC04	0.40
4" 100	19	25	10	30	≡	100 EC02	0.25
	35	45	12	100	≡	100 EC04	0.78
5" 125	38	45	12	120	≡	125 EC04	1.27
	38	45	12	120	≡	125 EC14	1.48
6" 150	45	60	20	275	≡	150 EC05	2.05
	45	60	20	275	≡	150 EC15	2.28
8" 200	50	60	20	400	≡	200 EC05	2.36
	50	60	20	400	≡	200 EC15	3.87
10" 250	54	60	25	460	≡	250 EC1H	6.82



**Standard finish:** Black tyres, labelled ANTI-STATIC; Lemon yellow centres to BS 391 C No. 355

### Wheel Characteristics

A special rubber compound having electrically conductive properties, moulded to cast iron centres under heat and pressure.

AS series wheels conform to BS 2099 and BS2050 (table 1 item 13) for hospital use.

**Standard finish:** Black tyres, labelled ELECTRICALLY CONDUCTIVE; Black centres

### Wheel Characteristics

A special rubber compound having electrically conductive properties, moulded to cast iron centres under heat and pressure.

EC series wheels conform to BS2050 (table 1 item 13).



## CP series

Polypropylene centre with cushion rubber tyre

A	B	C	D			Catalogue reference	
4" 100	24	45	12	70	■	100 CP04	0.26
	24	45	12	70	■	100 CP14	0.26
5" 125	28	45	12	90	■	125 CP04	0.42
	28	45	12	90	■	125 CP14	0.44
6 1/4" 160	40	60	20	115	■	160 CP5E	0.74
	40	60	20	115	■	160 CP1E	0.72
8" 200	50	60	20	135	■	200 CP5E	0.50
	50	60	20	135	■	200 CP1E	0.50



**Standard finish:** 100, 125mm: Grey; 160, 200mm Black tyres on grey centres

### Wheel Characteristics

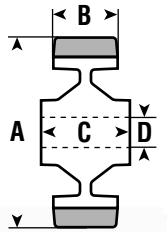
Soft, resilient cushion rubber tyres on moulded plastic centres.

CP series wheels are rustproof and attractive. They are quiet running and floor protecting.

## CU series

Pressed steel centre with cushion rubber tyre

A	B	C	D			Catalogue reference	
6 1/4" 160	40	60	20	135	■	160 CU1E	1.05
8" 200	50	51	25.4	100	■	200 CUR5	1.85
	50	60	20	205	■	200 CU1E	1.80
10" 250	50	51	25.4	155	■	250 CUPA	2.55
	50	51	25.4	155	■	250 CURA	2.58
12" 300	50	51	25.4	175	■	300 CUPA	3.63
	50	51	25.4	175	■	300 CURA	3.63



**Standard finish:** Black tyre on plated centre;

### Wheel Characteristics

Resilient cushion rubber tyres on steel centres. CU series wheels are silent and offer some shock absorbing capability.

## RL series

Polypropylene centre with "Revolite" rubber tyre

A	B	C	D			Catalogue reference	
7/8" 40	17	20	8	14	■	040 RL01	0.04
2" 50	17	20	8	14	■	050 RL01	0.05
	18	21	8	35	■	050 RL02	0.06
2 1/2" 63	18	20	8	16	■	063 RL01	0.07
	25	30	10	30	■	063 RL03	0.10
3" 75	20	24	10	36	■	075 RL02	0.10
	25	30	10	40	■	075 RL03	0.13
4" 100	20	24	10	41	■	100 RL02	0.15
	25	30	10	50	■	100 RL03	0.20

**Standard finish:**  
Grey

### Wheel

**Characteristics**  
Soft, resilient cushion rubber tyres on moulded plastic centres.

Revolite wheels are rustproof and attractive. They are quiet running, floor protecting and hygienic.



# GR series

Nylon or aluminium centre with abrasion resistant thick "Green Rubber" tyre

## Nylon centred wheels

A	B	C	D			Catalogue reference	
4" 100	32	45	12	180		100 GR1E	0.42
5" 125	32	45	12	200		125 GR1E	0.42

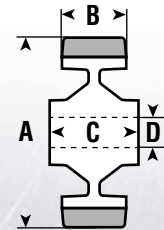
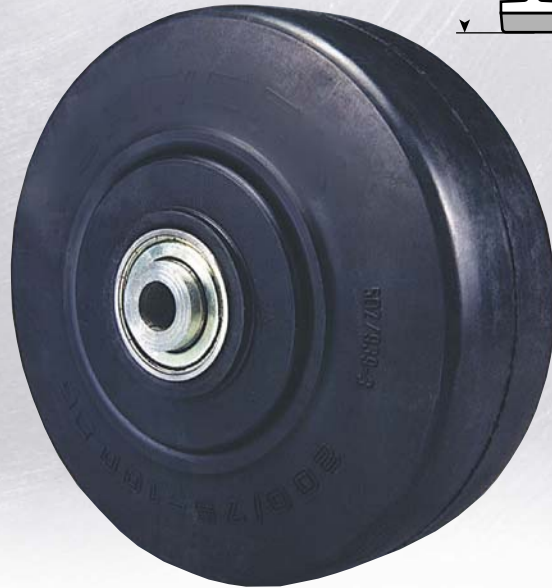
## Aluminium centred wheels

A	B	C	D			Catalogue reference	
5" 125	42	60	12	200		125 GR2H	0.66
6" 150	42	60	12	300		150 GR2H	1.08
6 1/4" 160	42	60	12	300		160 GR2H	1.18
8" 200	42	60	12	400		200 GR2H	1.36
10" 250	42	60	12	500		250 GR2H	2.15

# DR/DW series

Cast iron centre with demountable rubber tyre

A	B	C	D	Load capacity			Catalogue reference			
				Speed (kph)						
8" 200	75	88	25	6	500		200 DR2X	8.95		
				10	400					
				16	300					
				20	250					
10" 250	80	88	25	6	675		250 DR2X	8.95		
				10	540					
				16	410					
				20	340					
				10	750				250 DW2X	10.75
				20	450					
12" 300	85	88	25	6	800		300 DR2X	12.50		
				10	640					
				16	480					
				20	400					



**Standard finish:** Green tyre, black nylon or self colour aluminium centres

### Wheel Characteristics

Thick, abrasion resistant rubber tyres on nylon centres with roller bearings or aluminium centres with maintenance free ball journal bearings, lubricated for life.

Quiet running.

GR2H wheels suitable for power towing up to 6kph

**Standard finish:** Black tyres,

### Wheel Characteristics

Thick section, wire braced demountable rubber tyres on cast iron centres, all fitted with ball journal bearings. Durable, resilient and Ideally suited to towing applications.



# PT series

Cast iron centre with Revvothane  
polyurethane tyre

Steel centre - 050 and 063 wheel

**Standard finish:** Tan tyres, clear laquer centres

**Type hardness:** 92 - 97 shore A

**Effective temperature range:** -30°C to +80°C

## Wheel Characteristics

Revvothane wheels, 150 diameter and above are tyred in Vulkollan® and have a high tear strength, exceptional abrasion resistance and up to ten times the life of equivalent rubber tyred wheels under similar conditions and load.

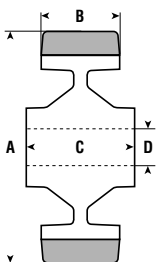
Load capacities are up to three times that of similar rubber wheels, enabling the use of a smaller diameter wheel if required.

Vulkollan® tyred wheels also offer excellent recovery from long periods of heavy static loading combined with low rolling resistance and floor saving.

Resistant to a wide range of oils, greases and chemicals. Sensitive to hydrolysing agents such as hot water, steam and hot moist air, strong acids and alcohols.

## Humid conditions

A special grade of polyurethane tyre has been developed for use in humid conditions without effecting the load rating. Substitute the letters PT in the catalogue reference with WC



A	B	C	D			Catalogue reference	
2" 50	14	17	12	80		050 PT0L	0.20
	19	24	8	80		050 PT02	0.13
2 1/2" 63	25	30	10	135		063 PT03	0.22
	25	31	9.5	135		063 PTR3	0.34
3" 75	19	24	10	90		075 PT02	0.23
	25	30	10	200		075 PT03	0.32
	25	45	12	175		075 PT04	0.38
	25	45	12	175		075 PT14	0.57
	25	45	15	175		075 PT24	0.60
4" 100	19	24	10	150		100 PT02	0.45
	19	30	10	150		100 PT03	0.47
	29	45	12	250		100 PT04	0.53
	29	45	12	250		100 PT14	0.88
	38	60	20	340		100 PT1H	1.78
	38	57	20	340		100 PT2H	1.73
5" 125	32	45	12	350		125 PT04	1.16
	32	45	12	350		125 PT14	1.28
	38	60	20	425		125 PT1H	1.73
	38	57	20	425		125 PT2H	1.73
6" 150	38	60	20	730		150 PT05	1.32
	38	60	20	730		150 PT15	2.70
	38	57	20	730		150 PT2H	2.58
	38	60	25	730		150 PT1A	2.95
7" 175	45	60	25	910		175 PT1A	3.89
8" 200	45	60	20	1100		200 PT05	3.27
	45	60	20	1100		200 PT15	4.17
	45	57	20	1100		200 PT2H	4.09
	45	60	25	1100		200 PT0A	3.27
	45	60	25	1100		200 PT1A	4.17
	45	60	19	1100		200 PTTA	4.30
	57	57	20	1300		200 PT2A	4.0
	75	89	19	1800		200 PTTT	7.94
	75	89	25.4	1800		200 PTTC	7.07
	75	83	25	1800		200 PT2P	7.94
10" 250	75	83	30	1800		200 PT2Q	7.94
	45	60	25	1200		250 PT1H	6.07
	45	57	25	1200		250 PT2H	6.04
	57	57	25	1500		250 PT2A	7.29
	75	89	19	2500		250 PTTT	11.30
	75	89	25.4	2500		250 PTTC	10.90
12" 300	75	83	25	2500		250 PT2P	11.30
	75	83	30	2500		250 PT2Q	10.90
	45	60	25	1400		300 PT1H	8.27
	45	57	25	1400		300 PT2H	8.50
	57	57	25	1800		300 PT2C	13.00
	75	89	19	2750		300 PTTT	13.50
	75	89	25.4	2750		300 PTTB	15.24
	75	83	25	2750		300 PT2P	12.00
16" 400	75	83	30	2750		300 PT2Q	15.25
	100	114	25.4	4500		400 PTTT	34.44
	100	104	35	4500		400 PT2A	34.44
	125	121	50	6700		400 PT3Z	49.84



TEL +31 (0)318 536611

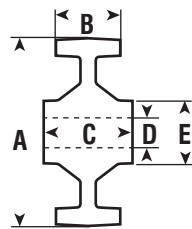


# PT Designer range series

A	B	C	D	E	Hub Dia.
75	35	35	48	55	300
100	40	45	48	57	500
125	30	35	48	55	500
	45	50	48	55	600
150	35	40	50	60	700
	50	55	52	65	900
200	40	50	70	80	1000
	60	70	70	80	1300
	75	80	70	80	1800
250	45	55	80	100	1200
	70	80	80	100	2000
	75	85	80	100	2500
300	50	60	90	115	1600
	75	85	90	115	2800
	100	100	90	115	3700
400	100	108	90	115	4500
	125	125	110	125	6700

Dimension **D** is maximum boundary bore diameter.

This range of wheels, based upon the popular PT series, provide the design engineer with a range of Vulkollan® polyurethane tyred wheels with specific boundary dimensions into which can be incorporated bearings, bores or keyways as required.



Making your wheel selection has been made easy by using the four part code system as illustrated:

wheel diameter	tread width	wheel series	bore diameter
300	75	PT	2 - 35

Bearing type code	Metric	Imperial
Plain bore	0	P
Roller bearing	1	R
Ball journal	2	J
Taper roller	3	T
Self-lube	4	S
Keyway to BS4235	U	V

**Example:** The first wheel listed in the chart left if fitted with a 20mm ball journal bearing would therefore be coded **75-35-PT2-20** If a 3/4" taper roller bearing was fitted, the code would be **75-35-PTT-0.75**



## Notes on product selection

To provide the design engineer with maximum flexibility, the stated wheel loadings are for operation under ideal conditions, ie. the wheel operates infrequently on a smooth surface without axial loading.

The stated wheel loadings must be reduced as below for operation under any of the following conditions:

**Frequent use** in excess of 45 minutes continuous operation *reduce loadings by 25%*

**Driving applications** *reduce loadings by 30%*

**Speeds 6-10kph** *reduce loadings by 20%*

**Speeds 10-16kph** *reduce loadings by 30%*

The above reductions are cumulative if more than one of the conditions exists.

Please contact our technical department for advice if the wheel is to be subjected to high humidity, speeds in excess of 16kph, exposure to chemicals, steering or running on a curved surface.

**NB:** Wheels with 75mm and 100mm tread diameter do not have a grease nipple fitted. Therefore, when ball journals are required they are supplied pre-lubricated, double shielded unless otherwise specified.

# NY & PT Series rollers

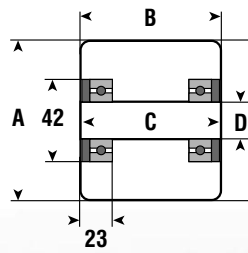
Nylon & Cast iron centre with Revvothane tyre

## Nylon roller

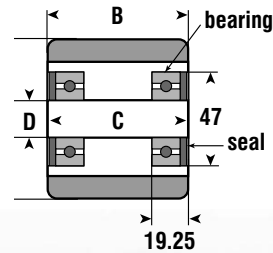
A	B	C	D			Catalogue reference	
85	75	73	see diag	410		<b>085 NY8M</b>	0.35
	75	73	20	410		<b>085 NY2M</b>	0.53
	100	98	see diag	410		<b>085 NY8B</b>	0.47
	100	98	20	410		<b>085 NY2B</b>	0.65

## Cast iron centre with Revvothane polyurethane tyre

A	B	C	D			Catalogue reference	
85	75	74.5	see diag	600		<b>085 PT8M</b>	1.18
	75	74.5	20	600		<b>085 PT2M</b>	1.45
	100	99.5	see diag	800		<b>085 PT8C</b>	1.61
	100	99.5	20	800		<b>085 PT2C</b>	1.89



NY



PT



**Standard finish:** NY series: White;  
PT series: Tan tyres, clear resin shellac painted centres

### Roller Characteristics

Pallet truck type rollers sharing the same characteristics as NY and PT series wheels, available with or without ball journal bearings.

Bearing spacers are also available: please ask for details.



TEL +31(0) 318 536611

# CI series

Cast iron

**Standard finish:** Clear lacquer

**Effective temperature range:** Most extremes, dependant upon bearing choice, please ask for details

## Wheel Characteristics

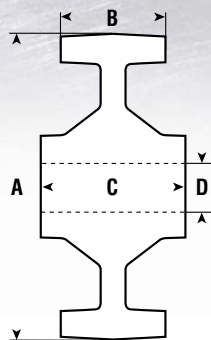
Cast iron wheels combine strength and shock resistance with long life and economy. They have a very low tractive resistance and are a first choice where ease of movement is required.

Being metallic, they will withstand extremes of temperature that would destroy plastic or tyred wheels.

We only supply heavy close grained castings of grey iron material sometimes described as 'semi-steel'. Our standard material specification is to BS EN 1561

Cast Iron wheels, however, can cause floor wear and noise. Although painted, like all ferrous metals, they will eventually rust.

Cast iron is a good and economical choice as a basic wheel for use primarily where rough service conditions prevail.



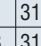
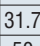
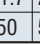


A	B	C	D			Catalogue reference	
2 1/2" 63	25	30	10	130		<b>063 CI03</b>	0.28
3" 75	25	30	10	135		<b>075 CI03</b>	0.38
	34	45	12	190		<b>075 CI04</b>	0.59
	34	45	12	190		<b>075 CI14</b>	0.76
	4" 100	38	45	12	250		<b>100 CI04</b>
38		45	12	250		<b>100 CI14</b>	1.02
45		60	20	320		<b>100 CI0G</b>	1.65
45		60	20	320		<b>100 CI1H</b>	1.68
45		49	20	320		<b>100 CI2H</b>	1.69
5" 125	38	45	12	500		<b>125 CI04</b>	1.23
	38	45	12	295		<b>125 CI14</b>	1.42
	45	60	20	630		<b>125 CI0G</b>	1.71
	45	60	20	630		<b>125 CI1H</b>	1.25
	45	49	20	630		<b>125 CI2H</b>	2.04
6" 150	45	60	20	1000		<b>150 CI05</b>	2.13
	45	60	20	1000		<b>150 CI15</b>	2.61
	45	49	20	1000		<b>150 CI2H</b>	2.54
	45	60	25	1000		<b>150 CI1A</b>	3.47
8" 200	45	60	20	730		<b>200 CI05</b>	3.23
	45	60	20	1150		<b>200 CI15</b>	4.13
	45	60	25	1150		<b>200 CI1A</b>	4.93
	45	49	20	1150		<b>200 CI2H</b>	4.13
	63	70	38.1	2270		<b>200 CIPT</b>	8.00
10" 250	54	60	25	1240		<b>250 CI1H</b>	7.00
	54	57	25	1240		<b>250 CI2H</b>	7.20
	63	70	38.1	2270		<b>250 CIPT</b>	10.00



# ST series

Steel

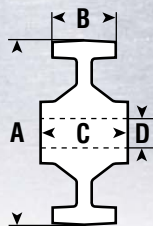
A	B	C	D			Catalogue reference	
2" 50	14	17	12	135		<b>050 STOL</b>	0.20
6" 150	50	48.3	20	1130		<b>150 ST2H</b>	5.99
	55	53	31.7	2000		<b>150 STTP</b>	6.36
	63	61	31.7	2270		<b>150 STTT</b>	7.53
8" 200	55	53	31.7	2500		<b>200 STTP</b>	18.64
	85	81	50	5080		<b>200 ST3T</b>	18.64

# FT series

Unflanged steel wheels

A	B	Max Load Rating	Catalogue reference
Tread Dia.	Tread Width		
100	60	3350	<b>100-60-FT</b>
150	80	6650	<b>150-80-FT</b>
200	90	9950	<b>200-90-FT</b>
225	100	12500	<b>225-100-FT</b>
250	100	13850	<b>250-100-FT</b>

A range of unflanged wheels manufactured from steel with a tensile strength approx. 600N/mm<sup>2</sup>



**Standard finish:** Clear resin shellac painted

### Wheel Characteristics

Possessing exceptional strength, shock resistance and long life, ST series wheels are machined from solid mild steel blanks for the toughest applications.

### Note

1. State type/size bearing, keyway or bore required  
N.B. Bearing selection could limit maximum load rating
2. 100-60-FT has no grease nipple fitted
3. The load capacity figures are for the maximum tread width. These load capacities should be reduced to suit the actual width of tread in contact with the running surface.
4. Grease nipple holes will not normally be included on wheels with keyways.



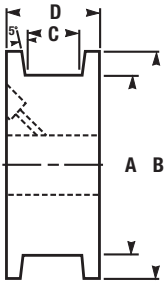
TEL +31(0)318 536611

# DF series

## Double flange steel wheels

A	B	C	D	Max Load Rating	Catalogue reference
Tread Dia.	Flange Dia.	Tread Width	Overall Width		
100	125	35	60	1950	100-35-DF
150	190	50	80	4150	150-50-DF
200	240	50	90	5500	200-50-DF
225	270	60	100	7450	225-60-DF
250	295	60	100	8250	250-60-DF

A range of double flanged wheels manufactured from steel with a tensile strength approx. 600 N/mm<sup>2</sup>



### Note

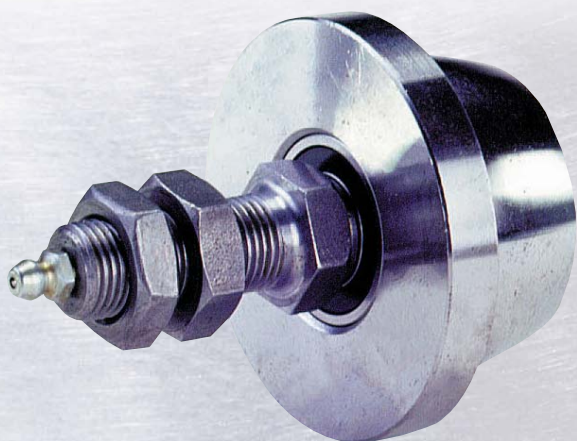
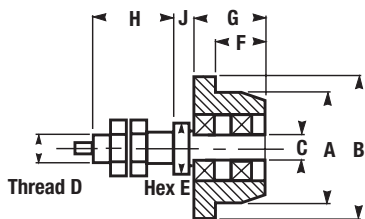
1. State type/size bearing, keyway or bore required  
N.B. Bearing selection could limit maximum load rating
2. 100-25-DF has no grease nipple fitted
3. The load capacity figures are for the maximum tread width. These load capacities should be reduced to suit the actual width of tread in contact with the running surface.
4. Grease nipple holes will not normally be included on wheels with keyways.

## WA series

Wheel and axle assembly

A	B	C	D	E	F	G	H	J	Load Rating kg	Catalogue reference
Tread Dia.	Flange Dia.	Axle Dia.	Mounting Thread	Across Flats	Tread Width					
55	70	12	M16 x 1.5	22	25	35	40	10	160	<b>55-WA</b>
85	100	20	M24 x 2.0	30	25	35	52	15	370	<b>85-WA</b>
105	125	25	M24 x 2.0	32	25	35	62	15	700	<b>105-WA</b>
133	160	25	M30 x 2.0	36	35	47	63	18	1000	<b>133-WA</b>
175	200	30	M36 x 3.0	46	35	50	73	20	1500	<b>175-WA</b>

A range of single flanged, radiused tread steel wheels fitted into a steel stub axle.



**Note**

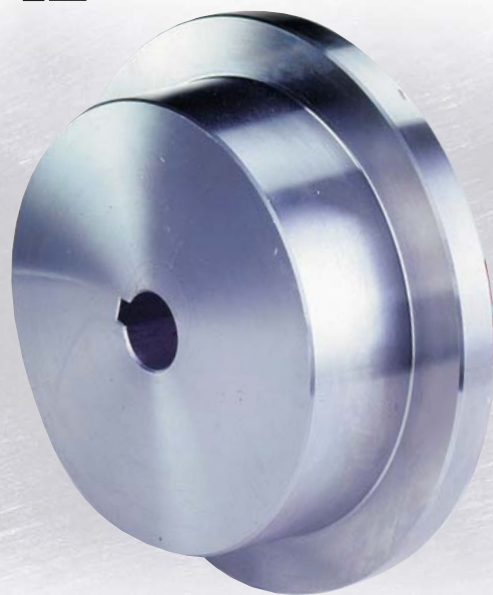
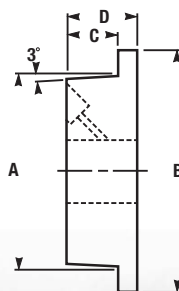
These wheels are suitable for running within standard rolled steel channel and R.S.J's.

## SF series

Single flange steel wheels

A	B	C	D	Max Load Rating	Catalogue reference
Tread Dia.	Flange Dia.	Tread Width	Overall Width		
75	100	25	37	1050	<b>75-25-SF</b>
100	125	25	37	1350	<b>100-25-SF</b>
150	190	40	55	3250	<b>150-40-SF</b>
200	240	55	70	6100	<b>200-55-SF</b>
225	270	55	70	6850	<b>225-55-SF</b>
250	295	60	75	8250	<b>250-60-SF</b>

A range of single flanged wheels manufactured from steel with a tensile strength approx. 600 N/mm<sup>2</sup>



**Note**

1. State type/size bearing, keyway or bore required  
N.B. Bearing selection could limit maximum load rating
2. 75-25-SF, 100-25-SF and 150-40-SF have no grease nipple fitted
3. The load capacity figures are for the maximum tread width. These load capacities should be reduced to suit the actual width of tread in contact with the running surface.
4. The wheels have a 3° taper tread as standard. A tread parallel to the wheel axis can be supplied as an alternative.
5. Grease nipple holes will not normally be included on wheels with keyways.

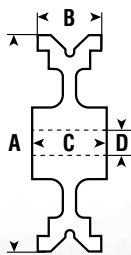




# CV series

V-Grooved cast iron

A	B	C	D			Catalogue reference	
3" 75	35	45	19	205		075 CVRA	0.84
	37	60	20	225		075 CV1B	1.06
4" 100	46	60	20	300		100 CV1H	2.19
	46	57	20	300		100 CV2H	2.25
5" 125	38	60	20	300		125 CV1H	2.32
	38	57	20	300		125 CV2H	3.18
6" 150	45	60	25	1000		150 CV1H	3.14
	45	57	20	1000		150 CV2H	3.84
8" 200	45	60	25	1000		200 CV1H	4.66
	45	57	20	1000		200 CV2H	5.36



**Standard finish:** Clear resin shellac painted

### Wheel Characteristics

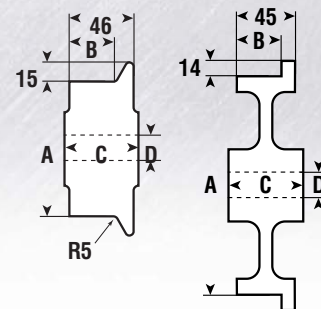
Ideal for use on inverted angle iron rail, sharing characteristics of CI series cast iron wheels.

# CF series

Single flanged cast iron



A	B	C	D			Taper Tread	Parallel Tread	
4" 100	29	60	20	800			100 CF1H	3.005
	35	60	20	800		100 CF1A		
	29	57	20	800			100 CF2H	2.900
	35	57	20	800		100 CF2A		
5" 125	40	60	20	900		125 CF1A	125 CF1H	
	40	57	20	900		125 CF2A	125 CF2H	
6" 150	35	60	20	1000		150 CF1A	150 CF1H	3.380
	35	60	25	1000		150 CF1C		
	35	57	20	1000		150 CF2A	150 CF2H	3.380
8" 200	40	60	20	1150		200 CF1A	200 CF1H	
	40	60	25	1150		200 CF1C		
	40	57	20	1150		200 CF2A	200 CF2H	



**Standard finish:** Clear resin shellac painted

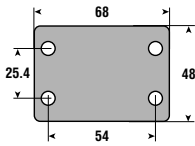
**Wheel Characteristics:** For rail use, sharing characteristics of CI series cast iron wheels.

# TS1 series

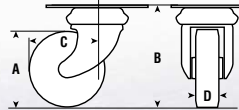
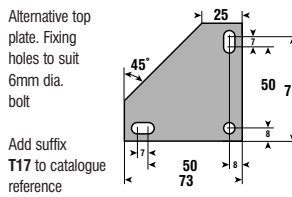
Rectangular top plate, Light Duty castors for loads up to 50kg

A	B	C	D	Wheel Type	Swivel	Catalogue reference	Weight
7/8" 40	63	44	17 14	REVVOLITE	☑	TS1 040 RL01	0.18
			17 18	NYLON	☐	TS1 040 NY01	0.16
2" 50	73	47	17 14	REVVOLITE	☑	TS1 050 RL01	0.19
			17 50	NYLON	☐	TS1 050 NY01	0.17
2 1/2" 63	85	54	17 16	REVVOLITE	☑	TS1 063 RL01	0.22
			17 50	NYLON	☐	TS1 063 NY01	0.20

### STANDARD TOP PLATE



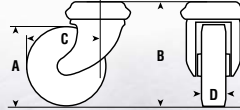
### ALTERNATIVE T17 TOP PLATE



# BS1 series

Bolt hole castors (for M8 bolt) loads up to 50kg

A	B	C	D	Wheel Type	Swivel	Catalogue reference	Weight
7/8" 40	63	44	17 14	REVVOLITE	☑	BS1 040 RL01	0.12
			17 18	NYLON	☐	BS1 040 NY01	0.11
2" 50	73	47	17 14	REVVOLITE	☑	BS1 050 RL01	0.14
			17 50	NYLON	☐	BS1 050 NY01	0.13
2 1/2" 63	82	54	18 16	REVVOLITE	☑	BS1 063 RL01	0.16
			17 50	NYLON	☐	BS1 063 NY01	0.15

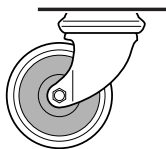


### THREADGUARDS (T)

40, 50mm NY; 50, 63mm RL only

Prevent string, thread etc from binding wheel

Add suffix T to catalogue reference

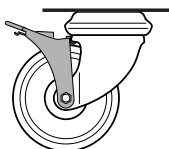


### FOOTBRAKE (B)

50, 63mm castors only

The foot operated pedal locks wheel

Add suffix B to catalogue reference



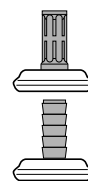
### EXPANDING PLUGS (R\_/S\_)

Supplied in five sizes:

Expands from Round (nylon) Ref.  
 15.5 to 18.4mm **R15**  
 18.1 to 21.4mm **R18**  
 21.1 to 24.4mm **R21**

Expands from Square (steel) Ref.  
 15.5 to 17.0mm **S15**  
 21.3 to 23.5mm **S21**

Add ref. in **bold type** to catalogue reference



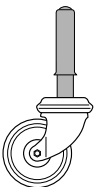
### SPRUNG PLUG (SA-)

For mobile steps. Fitted with a stepped plug 136mm long fitted into a 25.4mm (1") O.D. outer sleeve which compresses on loading.

Supplied in two spring weights:

Spring weight Ref.  
 15Kg **SA1**  
 30Kg **SA2**

Add ref. in **bold type** to catalogue reference



# TS2-TF2 series

Rectangular top plate castors for loads up to 75kg

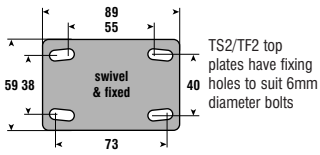
# BS2-BF2 series

Bolt hole castors (for M10 bolt) loads up to 75kg

A	B	C	D	Wheel Type	Swivel	Swivel		Fixed	
						Catalogue reference	Catalogue reference	Catalogue reference	Catalogue reference
2" 50	76	53	20 55	NYLON	TS2 050 NY02	0.23	TF2 050 NY02	0.17	
3" 75	98	65	20 36	REVVOLITE	TS2 075 RL02	0.33	TF2 075 RL02	0.27	
			20 60	NYLON	TS2 075 NY02	0.28	TF2 075 NY02	0.22	
4" 100	123	78	20 41	REVVOLITE	TS2 100 RL02	0.39	TF2 100 RL02	0.33	
			20 75	NYLON	TS2 100 NY02	0.34	TF2 100 NY02	0.27	

A	B	C	D	Wheel Type	Swivel	Swivel		Fixed	
						Catalogue reference	Catalogue reference	Catalogue reference	Catalogue reference
2" 50	74	53	20 55	NYLON	BS2 050 NY02	0.17	BF2 050 NY02	0.16	
3" 75	96	65	20 36	REVVOLITE	BS2 075 RL02	0.27	BF2 075 RL02	0.26	
			20 60	NYLON	BS2 075 NY02	0.22	BF2 075 NY02	0.22	
4" 100	121	78	20 41	REVVOLITE	BS2 100 RL02	0.33	BF2 100 RL02	0.31	
			20 75	NYLON	BS2 100 NY02	0.27	BF2 100 NY02	0.20	

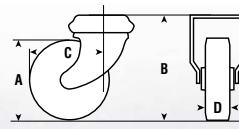
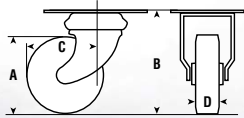
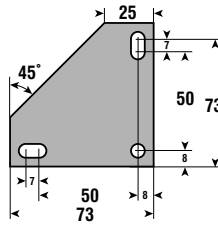
### STANDARD TOP PLATE



### ALTERNATIVE T17 TOP PLATE

Swivel castor only

Alternative top plate. Fixing holes to suit 6mm dia. bolt  
Add suffix **T17** to catalogue reference

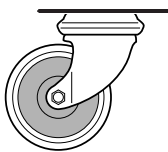


### THREADGUARDS (T)

40, 50mm NY  
50, 63mm RL only

Prevent string, thread etc from binding wheel

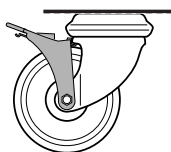
Add suffix **T** to catalogue reference



### FOOTBRAKE (B)

The foot operated pedal locks wheel

Add suffix **B** to catalogue reference



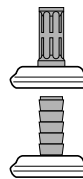
### EXPANDING PLUGS (R\_/S\_)

Supplied in five sizes:

Expands from Round (nylon) Ref.  
15.5 to 18.4mm **R15**  
18.1 to 21.4mm **R18**  
21.1 to 24.4mm **R21**

Expands from Square (steel) Ref.  
15.5 to 17.0mm **S15**  
21.3 to 23.5mm **S21**

Add ref. in **bold type** to catalogue reference



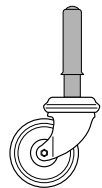
### SPRUNG PLUG (SA-)

For mobile steps. Fitted with a stepped plug 136mm long fitted into a 25.4mm (1") O.D. outer sleeve which compresses on loading.

Supplied in two spring weights:

Spring weight Ref.  
15Kg **SA1**  
30Kg **SA2**

Add ref. in **bold type** to catalogue reference

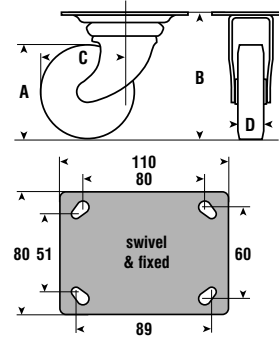




# TS3-TF3 series

Rectangular Top Plate castors for loads up to 125kg

A	B	C	D	Wheel Type	Swivel/Fixed	Swivel		Fixed		
						Catalogue reference	Weight	Catalogue reference	Weight	
2 1/2" 63	94	65	25 30	REVLITE	Swivel	TS3 063 RL03	0.51	TF3 063 RL03	0.42	
			25 120	NYLON	Fixed	TS3 063 NY03	0.46	TF3 063 NY03	0.37	
			25 70	RUBBER TYRED	Swivel	TS3 063 RU03	0.64	TF3 063 RU03	0.55	
			25 125	REVVOHANE	Fixed	TS3 063 PT03	0.64	TF3 063 PT03	0.55	
3"	75	107	72	25 40	Swivel	TS3 075 RL03	0.55	TF3 075 RL03	0.46	
				25 125	NYLON	Fixed	TS3 075 NY03	0.50	TF3 075 NY03	0.41
				25 70	RUBBER TYRED	Swivel	TS3 075 RU03	0.78	TF3 075 RU03	0.69
				25 125	REVVOHANE	Fixed	TS3 075 PT03	0.75	TF3 075 PT03	0.65
4" 100	132	84	25 50	Swivel	TS3 100 RL03	0.63	TF3 100 RL03	0.55		
			25 125	NYLON	Fixed	TS3 100 NY03	0.52	TF3 100 NY03	0.43	
			19 125	REVVOHANE	Fixed	TS3 100 PT03	0.89	TF3 100 PT03	0.81	
5" 125	157	95	25 125	NYLON	Fixed	TS3 125 NY03	0.54			



When fitting at 80 x 60mm hole centres use 8mm diameter bolts

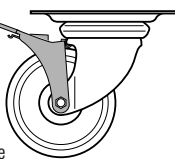
When fitting at 89 x 51mm hole centres use 6mm diameter bolts



### FOOTBRAKE (B)

Swivel castors only

The foot operated pedal locks wheel



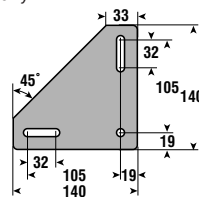
Add suffix **B** to catalogue reference

### T19 TOP PLATE

Swivel castors only

Alternative top plate. Fixing holes to suit 8mm diameter bolt

Add suffix **T19** to catalogue reference

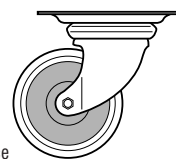


### THREADGUARDS (T)

All castors except 63mm with RL wheel

Prevent string, thread etc from binding wheel

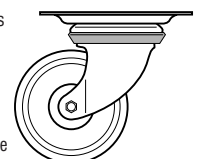
Add suffix **T** to catalogue reference



### HEAD SEAL (S)

Prevent the ingress of dirt and dust to swivel head

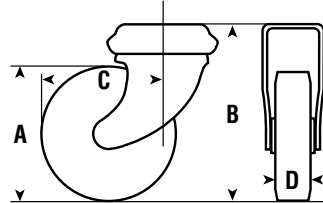
Add suffix **S** to catalogue reference



# BS3-BF3 series

Bolt hole castors (for M12 bolt) loads up to 110kg

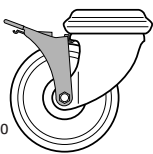
A	B	C	D	Wheel Type	Swivel	Fixed			
						Catalogue reference	Catalogue reference		
2 1/2" 63	92	62	25 30	REVLITE	BS3 063 RL03	0.39	BF3 063 RL03	0.27	
			25 70	RUBBER TYRED	BS3 063 RU03	0.52	BF3 063 RU03	0.40	
			25 110	REVVOHANE	BS3 063 PT03	0.51	BF3 063 PT03	0.39	
			25 110	NYLON	BS3 063 NY03	0.34	BF3 063 NY03	0.22	
3"	75	104	72	25 40	REVLITE	BS3 075 RL03	0.42	BF3 075 RL03	0.31
				25 70	RUBBER TYRED	BS3 075 RU03	0.63	BF3 075 RU03	0.51
				25 110	REVVOHANE	BS3 075 PT03	0.62	BF3 075 PT03	0.50
				25 110	NYLON	BS3 075 NY03	0.37	BF3 075 NY03	0.26
4"	100	129	84	25 50	REVLITE	BS3 100 RL03	0.51	BF3 100 RL03	0.40
				25 110	REVVOHANE	BS3 100 PT03	0.78	BF3 100 PT03	0.67
				19 110	NYLON	BS3 100 NY03	0.43	BF3 100 NY03	0.32
5"	125	155	95	25 110	NYLON	BS3 125 NY03	0.60		



### FOOTBRAKE (B)

Swivel castors only

The foot operated pedal locks wheel

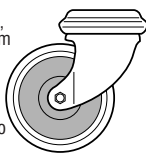


Add suffix **B** to catalogue reference

### THREADGUARDS (T)

All castors except 63mm with RL wheel

Prevent string, thread etc from binding wheel



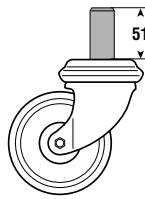
Add suffix **T** to catalogue reference

### ROUND STEEL PLUGS (RP-)

Supplied in two sizes:

Plug diameter Ref.  
25.4mm(1") **RP3**  
31.75mm(1 1/4") **RP5**

Add ref. in **bold type** to catalogue reference

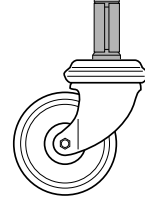


### EXPANDING STEEL PLUGS (EP-)

Supplied in four sizes:

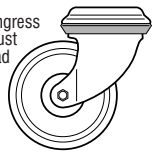
Expands from Ref.  
18.0 to 19.4mm **EP1**  
21.2 to 23.2mm **EP2**  
24.4 to 26.4mm **EP3**  
27.6 to 29.6mm **EP4**

Add ref. in **bold type** to catalogue reference



### HEAD SEAL (S)

Prevent the ingress of dirt and dust to swivel head



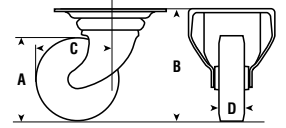
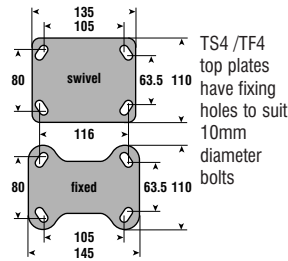
Add suffix **S** to catalogue reference

# TS4-TF4 series

Top plate castors for loads up to 265kg

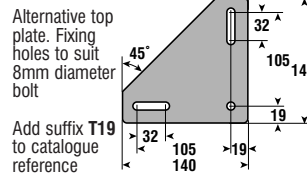
A	B	C	D	Wheel Type	Swivel	Swivel		Fixed			
						Catalogue reference	Weight	Catalogue reference	Weight		
3" 75	114	73	32	80 RUBBER TYRED	TS4 075 RU04	1.24	TF4 075 RU04	0.86			
				25 175 REVVOTHANE	TS4 075 PT04	1.21	TF4 075 PT04	0.83			
				25 175 REVVOTHANE	TS4 075 PT14	1.40	TF4 075 PT14	1.00			
				25 175 REVVOTHANE	TS4 075 PT24	1.55	TF4 075 PT24	1.18			
				35 160 NYLON	TS4 075 NY04	0.91	TF4 075 NY04	0.53			
				35 170 NYLON	TS4 075 NY14	0.95	TF4 075 NY14	0.59			
				38 190 REVVOPLAST	TS4 075 RP04	0.98	TF4 075 RP04	0.60			
				34 190 CAST IRON	TS4 075 CI04	1.44	TF4 075 CI04	1.14			
				34 135 CAST IRON	TS4 075 CI14	1.61	TF4 075 CI14	1.30			
				4" 100	139	91	35 135 RUBBER TYRED	TS4 100 RU04	1.69	TF4 100 RU04	1.28
							35 180 RUBBER TYRED	TS4 100 RU14	1.89	TF4 100 RU14	1.46
							32 225 GREEN RUBBER	TS4 100 GR1E	1.15	TF4 100 GR1E	0.73
29 250 REVVOTHANE	TS4 100 PT04	1.80	TF4 100 PT04				1.41				
29 250 REVVOTHANE	TS4 100 PT14	1.80	TF4 100 PT14				1.41				
35 225 NYLON	TS4 100 NY04	1.01	TF4 100 NY04				0.64				
35 225 NYLON	TS4 100 NY14	1.05	TF4 100 NY14				0.68				
38 250 CAST IRON	TS4 100 CI04	1.41	TF4 100 CI04				1.37				
38 160 CAST IRON	TS4 100 CI14	1.90	TF4 100 CI14				2.52				
5" 125	164	105	38 160 RUBBER TYRED				TS4 125 RU04	2.20	TF4 125 RU04	1.82	
			38 200 RUBBER TYRED				TS4 125 RU14	2.28	TF4 125 RU14	1.90	
			32 180 GREEN RUBBER				TS4 125 GR1E	1.35	TF4 125 GR1E	1.93	
			35 180 NYTHANE	TS4 125 NT04	1.12	TF4 125 NT04	0.80				
			35 250 NYTHANE	TS4 125 NT14	1.13	TF4 125 NT14	0.89				
			35 265 REVVOTHANE	TS4 125 PT04	2.05	TF4 125 PT04	1.69				
			35 265 REVVOTHANE	TS4 125 PT14	2.18	TF4 125 PT14	1.81				
			35 265 NYLON	TS4 125 NY04	1.10	TF4 125 NY04	0.73				
			35 265 NYLON	TS4 125 NY14	1.14	TF4 125 NY14	0.77				
			38 265 CAST IRON	TS4 125 CI04	2.13	TF4 125 CI04	1.76				
			38 265 CAST IRON	TS4 125 CI14	2.22	TF4 125 CI14	1.86				

### STANDARD TOP PLATE



### T19 TOP PLATE

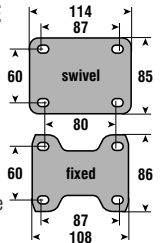
Swivel castors only



### T03 TOP PLATE

Alternative top plate. Fixing holes to suit 8mm diameter bolt

Add suffix T03 to catalogue reference

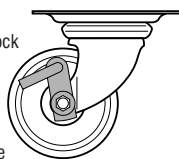


TS4 series castors can be fitted with rubber head seals in order to prevent the ingress of dirt and dust. Add suffix **S** to catalogue reference

#### WHEEL LOCK (W)

Swivel castors only

A simple hand operated parking lock

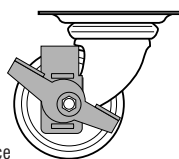


Add suffix **W** to catalogue reference

#### FOOTBRAKE (H)

100, 125mm swivel castors only

The foot operated pedal locks wheel

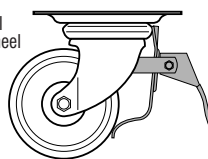


Add suffix **H** to catalogue reference

#### SWIVEL AND WHEEL LOCK (L)

100, 125mm swivel castors only

The foot pedal locks both wheel & swivel

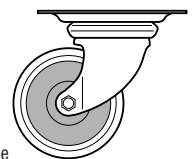


Add suffix **L** to catalogue reference

#### THREADGUARDS (T)

100, 125mm only

Prevent string, thread etc from binding wheel



Add suffix **T** to catalogue reference



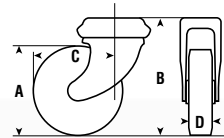
TEL +31(0)318 536611



# BS4-BF4 series

Bolt hole castors (for M12 bolt) loads up to 225kg

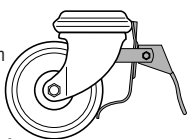
A	B	C	D	Wheel Type	Swivel	Fixed		
						Catalogue reference	Catalogue reference	
3" 75	109	73	32 80	RUBBER TYRED	BS4 075 RU04	0.96	BF4 075 RU04	0.69
				REVVOETHANE	BS4 075 PT04	0.93	BF4 075 PT04	0.62
				REVVOETHANE	BS4 075 PT14	0.96	BF4 075 PT14	0.65
				REVVOETHANE	BS4 075 PT24	0.98	BF4 075 PT24	0.68
				NYLON	BS4 075 NY04	0.63	BF4 075 NY04	0.36
				NYLON	BS4 075 NY14	0.66	BF4 075 NY14	0.39
				REVVOPLAST	BS4 075 RP04	0.69	BF4 075 RP04	0.42
				CAST IRON	BS4 075 CI04	1.15	BF4 075 CI04	0.88
				CAST IRON	BS4 075 CI14	1.23	BF4 075 CI14	1.00
				4" 100	134	91	35 135	RUBBER TYRED
RUBBER TYRED	BS4 100 RU14	1.40	BF4 100 RU14					1.15
GREEN RUBBER	BS4 100 GR1E	0.87	BF4 100 GR1E					0.53
REVVOETHANE	BS4 100 PT04	1.51	BF4 100 PT04					1.19
REVVOETHANE	BS4 100 PT14	1.47	BF4 100 PT14					1.23
NYLON	BS4 100 NY04	0.73	BF4 100 NY04					0.45
NYLON	BS4 100 NY14	0.76	BF4 100 NY14					0.49
CAST IRON	BS4 100 CI04	1.46	BF4 100 CI04					1.19
CAST IRON	BS4 100 CI14	1.61	BF4 100 CI14					1.34
5" 125	159	105	38 160					RUBBER TYRED
				RUBBER TYRED	BS4 125 RU14	1.91	BF4 125 RU14	1.63
				GREEN RUBBER	BS4 125 GR1E	0.98	BF4 125 GR1E	0.64
				NYTHANE	BS4 125 NT04	0.86	BF4 125 NT04	0.62
				NYTHANE	BS4 125 NT14	0.93	BF4 125 NT14	0.71
				REVVOETHANE	BS4 125 PT04	1.88	BF4 125 PT04	1.40
				REVVOETHANE	BS4 125 PT14	1.90	BF4 125 PT14	1.50
				NYLON	BS4 125 NY04	0.82	BF4 125 NY04	0.55
				NYLON	BS4 125 NY14	0.86	BF4 125 NY14	0.58
				CAST IRON	BS4 125 CI04	1.76	BF4 125 CI04	1.60
CAST IRON	BS4 125 CI14	2.04	BF4 125 CI14	1.76				



BS4 series castors can be fitted with rubber head seals in order to prevent the ingress of dirt and dust. Add suffix **S** to catalogue reference

**SWIVEL AND WHEEL LOCK (L)**  
100, 125mm swivel castors only

The foot pedal locks both wheel & swivel  
Add suffix **L** to catalogue reference



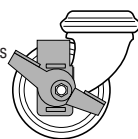
**WHEEL LOCK (W)**  
Swivel castors only

A simple hand operated parking lock  
Add suffix **W** to catalogue reference



**FOOTBRAKE (H)**  
100, 125mm swivel castors only

The foot operated pedal locks wheel  
Add suffix **H** to catalogue reference



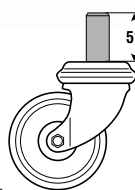
**THREADGUARDS (T)**  
100, 125mm only

Prevent string, thread etc from binding wheel  
Add suffix **T** to catalogue reference



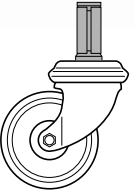
**ROUND STEEL PLUGS (RP-)**

Supplied in two sizes:  
Plug diameter Ref.  
25.4mm(1") **RP3**  
31.75mm(1 1/4") **RP5**  
Add ref. in **bold type** to catalogue reference



**EXPANDING STEEL PLUGS (EP-)**

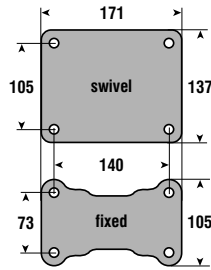
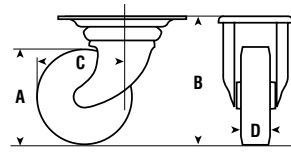
Supplied in four sizes:  
Expands from Ref.  
18.0 to 19.4mm **EP1**  
21.2 to 23.2mm **EP2**  
24.4 to 26.4mm **EP3**  
27.6 to 29.6mm **EP4**  
Add ref. in **bold type** to catalogue reference



# TS5-TF5 series

Top plate castors for loads up to 1000kg

A	B	C	D	Wheel Type	Wheel Type Icon	Swivel		Fixed	
						Catalogue reference	Weight	Catalogue reference	Weight
6 1/4" 160	203	129	45	300	NYTHANE	TS5 150 NTOE	3.30	TF5 150 NTOE	2.50
				300	NYTHANE	TS5 150 NT25	3.50	TF5 150 NT25	2.70
				370	RUBBER TYRED	TS5 150 RU05	4.25	TF5 150 RU05	3.06
				370	RUBBER TYRED	TS5 150 RU15	4.48	TF5 150 RU15	3.29
				730	REVVOTHANE	TS5 150 PT05	4.12	TF5 150 PT05	2.93
				730	REVVOTHANE	TS5 150 PT15	4.89	TF5 150 PT15	3.70
				500	NYLON	TS5 150 NY05	2.56	TF5 150 NY05	1.37
				500	NYLON	TS5 150 NY15	2.81	TF5 150 NY15	1.62
				800	NYLON	TS5 150 NY2H	2.95	TF5 150 NY2H	1.78
				910	CAST IRON	TS5 150 C105	4.34	TF5 150 C105	3.15
				910	CAST IRON	TS5 150 C115	4.81	TF5 150 C115	3.62
				8 1/4" 200	248	154	42	GREEN RUBBER	TS5 200 GR2H
50	NYTHANE	TS5 200 NTOE	3.90	TF5 200 NTOE			3.20		
300	NYTHANE	TS5 200 NT2H	3.57	TF5 200 NT2H			2.49		
400	GREEN RUBBER	TS5 200 GR2H	3.80	TF5 200 GR2H			3.00		
500	RUBBER TYRED	TS5 200 RU05	5.38	TF5 200 RU05			4.23		
500	RUBBER TYRED	TS5 200 RU15	5.87	TF5 200 RU15			4.72		
500	NYLON	TS5 200 NY05	3.04	TF5 200 NY05			1.89		
500	NYLON	TS5 200 NY15	3.20	TF5 200 NY15			2.05		
1000	NYLON	TS5 200 NY2H	4.08	TF5 200 NY2H			3.00		
1000	REVVOTHANE	TS5 200 PT05	5.71	TF5 200 PT05			4.57		
1000	REVVOTHANE	TS5 200 PT15	6.45	TF5 200 PT15			5.30		
1000	CAST IRON	TS5 200 C105	5.51	TF5 200 C105			3.26		
1000	CAST IRON	TS5 200 C115	6.41	TF5 200 C115	4.36				



TS5 /TF5 top plates have fixing holes to suit 10mm diameter bolts



Headseal fitted as standard to TS5 castors

### WHEEL LOCK (W)

All swivel castors except with 160mm wheel

A simple hand operated parking lock

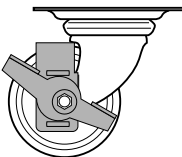


Add suffix **W** to catalogue reference

### FOOTBRAKE (H)

All swivel castors except with 160mm wheel

The foot operated pedal locks wheel

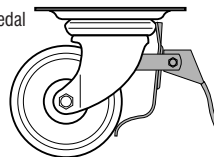


Add suffix **H** to catalogue reference

### SWIVEL AND WHEEL LOCK (L)

All swivel castors except with 160mm wheel

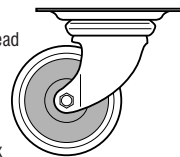
The foot pedal locks both wheel & swivel



Add suffix **L** to catalogue reference

### THREADGUARDS (T)

Prevent string, thread etc from binding wheel



Add suffix **T** to catalogue reference

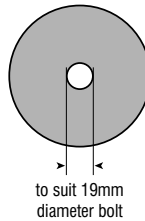
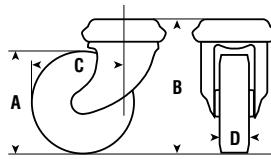


TEL +31(0)318 536611

# BS5 series

Bolt hole castors (for M19 bolt) loads up to 600kg

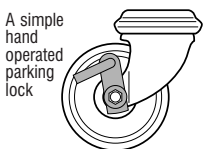
A	B	C	D		Wheel Type	Swivel	Catalogue reference						
6"150	200	129	45	300	NYTHANE		BS5 150 NT0E	2.45					
					NYTHANE		BS5 150 NT25	2.50					
					RUBBER TYRED		BS5 150 RU05	3.55					
					RUBBER TYRED		BS5 150 RU15	3.78					
					REVVOTHANE		BS5 150 PT05	4.20					
					REVVOTHANE		BS5 150 PT15	4.20					
					NYLON		BS5 150 NY05	1.86					
					NYLON		BS5 150 NY15	2.12					
					NYLON		BS5 150 NY2H	2.24					
					CAST IRON		BS5 150 CI05	4.11					
					CAST IRON		BS5 150 CI15	4.81					
					6 1/4"160	205	134	42	300	GREEN RUBBER		BS5 160 GR2H	2.95
										NYTHANE		BS5 200 NT0E	3.10
	BS5 200 NT2H	3.40											
GREEN RUBBER		BS5 200 GR2H	3.65										
NYLON		BS5 200 NY05	3.34										
NYLON		BS5 200 NY15	2.49										
NYLON		BS5 200 NY2H	2.70										
RUBBER TYRED		BS5 200 RU05	4.69										
RUBBER TYRED		BS5 200 RU15	4.69										
REVVOTHANE		BS5 200 PT05	5.01										
REVVOTHANE		BS5 200 PT15	5.74										
CAST IRON		BS5 200 C105	4.81										
CAST IRON		BS5 200 C115	5.70										
8"200	245	154	50	400						NYTHANE		BS5 200 NT0E	3.10
										NYTHANE		BS5 200 NT2H	3.40
										GREEN RUBBER		BS5 200 GR2H	3.65
										NYLON		BS5 200 NY05	3.34
					NYLON		BS5 200 NY15	2.49					
					NYLON		BS5 200 NY2H	2.70					
					RUBBER TYRED		BS5 200 RU05	4.69					
					RUBBER TYRED		BS5 200 RU15	4.69					
					REVVOTHANE		BS5 200 PT05	5.01					
					REVVOTHANE		BS5 200 PT15	5.74					
					CAST IRON		BS5 200 C105	4.81					
					CAST IRON		BS5 200 C115	5.70					



Headseal fitted as standard to BS5 castors

## WHEEL LOCK (W)

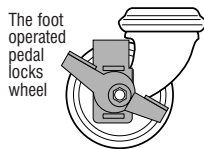
All castors except with 160mm wheel



Add suffix **W** to catalogue reference

## FOOTBRAKE (H)

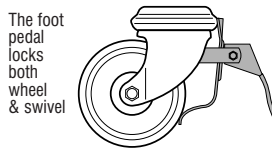
All castors except with 160mm wheel



Add suffix **H** to catalogue reference

## SWIVEL AND WHEEL LOCK (L)

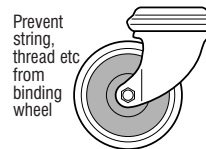
All castors except with 160mm wheel



Add suffix **L** to catalogue reference

## THREADGUARDS (T)

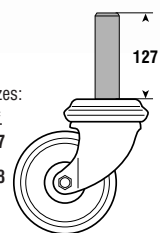
All castors except with GR wheel



Add suffix **T** to catalogue reference

## ROUND STEEL PLUGS (RP-)

Supplied in two sizes:  
Plug diameter Ref.  
34.9mm(1 3/8") **RP7**  
38.1mm(1 1/2") **RP8**



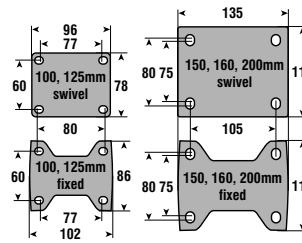
Add ref. in **bold type** to catalogue reference



# TSE-TFE series

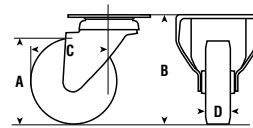
Top plate castors. Double row swivel ballrace for loads up to 320kg

A	B	C	D	Wheel Type	Wheel Type Icon	Swivel		Fixed	
						Catalogue reference	Weight (kg)	Catalogue reference	Weight (kg)
4"100	128	90	24 70	CUSHION RUBBER		TSE 100 CP14	0.86	TFE 100 CP14	0.58
			32 150	GREEN RUBBER		TSE 100 GR1E	0.84	TFE 100 GR1E	0.57
			35 180	NYLON		TSE 100 NY04	0.75	TFE 100 NY04	0.47
			35 180	NYLON		TSE 100 NY14	0.79	TFE 100 NY14	0.51
5"125	155	102	28 90	CUSHION RUBBER		TSE 125 CP14	1.00	TFE 125 CP14	0.72
			32 150	GREEN RUBBER		TSE 125 GR1E	1.03	TFE 125 GR1E	0.77
			35 180	NYLON		TSE 125 NY04	0.84	TFE 125 NY04	0.56
			35 180	NYLON		TSE 125 NY14	0.87	TFE 125 NY14	0.60
			35 150	NYTHANE		TSE 125 NT04	0.97	TFE 125 NT04	0.70
			35 150	NYTHANE		TSE 125 NT14	0.99	TFE 125 NT14	0.71
6"150	190	130	45 320	NYLON		TSE 150 NY05	2.86	TFE 150 NY05	1.35
			40 320	NYLON		TSE 150 NY15	2.12	TFE 150 NY15	1.61
6 1/2"160	208	134	40 135	CUSHION RUBBER		TSE 160 CU1E	2.00	TFE 160 CU1E	1.50
8"200	235	155	50 205	CUSHION RUBBER		TSE 200 CU1E	3.31	TFE 200 CU1E	2.80
			50 320	NYLON		TSE 200 NY05	2.23	TFE 200 NY05	1.74
			50 320	NYLON		TSE 200 NY15	2.37	TFE 200 NY15	1.88



TSE /TFE 100, 125mm top plates have fixing holes to suit 8mm diameter bolts

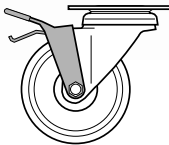
TSE /TFE 150, 160, 200mm top plates have fixing holes to suit 10mm diameter bolts



### SWIVEL AND WHEEL LOCK (L)

As fitted to 100, 125mm swivel castors

The foot pedal locks both wheel & swivel

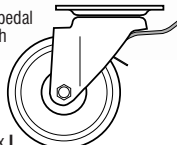


Add suffix **L** to catalogue reference

### SWIVEL AND WHEEL LOCK (L)

As fitted to 150, 160, 200mm swivel castors

The foot pedal locks both wheel & swivel

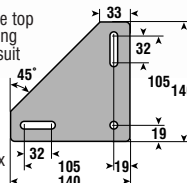


Add suffix **L** to catalogue reference

### T19 TOP PLATE

100, 125mm swivel castors only

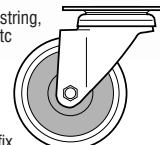
Alternative top plate. Fixing holes to suit 8mm diameter bolt



Add suffix **T19** to catalogue reference

### THREADGUARDS (T)

Prevent string, thread etc from binding wheel

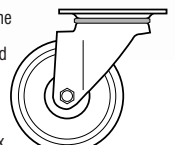


Add suffix **T** to catalogue reference

### HEAD SEAL (S)

150, 160, 200mm castors only

Prevent the ingress of dirt and dust to swivel head



Add suffix **S** to catalogue reference



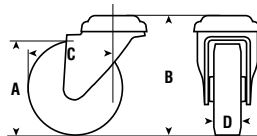
TEL +31(0)318 536611

# BSE series

Bolt hole castors (for M12 bolt)

Double row swivel ballrace for loads up to 320kg

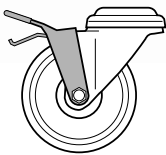
A	B	C	D	Wheel Type	Swivel	Swivel	
						Catalogue reference	⌀
4"100	125	90	24 70	CUSHION RUBBER		BSE 100 CP14	0.70
			32 150	GREEN RUBBER		BSE 100 GR1E	0.68
			35 180	NYLON		BSE 100 NY04	0.59
			35 180	NYLON		BSE 100 NY14	0.68
5"125	152	102	28 90	CUSHION RUBBER		BSE 125 CP14	0.91
			32 150	GREEN RUBBER		BSE 125 GR1E	0.87
			35 180	NYLON		BSE 125 NY04	0.68
			35 180	NYLON		BSE 125 NY14	0.69
			35 150	NYTHANE		BSE 125 NT04	0.79
			35 150	NYTHANE		BSE 125 NT14	0.84
6"150	190	130	45 320	NYLON		BSE 150 NY05	1.46
			40 320	NYLON		BSE 150 NY15	1.50
6 1/4 160	195	134	40 135	CUSHION RUBBER		BSE 160 CU1E	1.80
8"200	235	155	50 205	CUSHION RUBBER		BSE 200 CU1E	2.05
			50 320	NYLON		BSE 200 NY05	2.20
			50 320	NYLON		BSE 200 NY15	2.25



## SWIVEL AND WHEEL LOCK (L)

As fitted to 100, 125mm swivel castors

The foot pedal locks both wheel & swivel

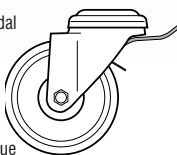


Add suffix **L** to catalogue reference

## SWIVEL AND WHEEL LOCK (L)

As fitted to 150, 160, 200mm swivel castors

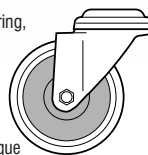
The foot pedal locks both wheel & swivel



Add suffix **L** to catalogue reference

## THREADGUARDS (T)

Prevent string, thread etc from binding wheel



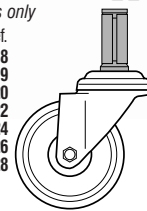
Add suffix **T** to catalogue reference

## EXPANDING STEEL PLUGS (E\_)

100, 125mm castors only

Expands from Ref.  
18.0 to 19.4mm **E18**  
19.3 to 20.7mm **E19**  
20.6 to 22.6mm **E20**  
22.5 to 24.6mm **E22**  
24.4 to 26.4mm **E24**  
26.3 to 28.3mm **E26**  
28.1 to 30.0mm **E28**

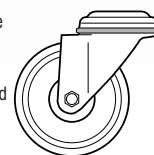
Add ref. in **bold type** to catalogue reference



## HEAD SEAL (S)

150, 160, 200mm castors only

Prevent the ingress of dirt and dust to swivel head



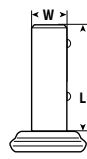
Add suffix **S** to catalogue reference

# SS4-SS5 series

Scaffold castors for loads up to 820kg, conform to BS 1139: part 3: 1994. Also conforms to DIN 4422: HD 1004: 1992 when fitted with wheel and swivel lock (L).

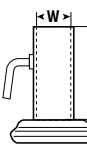
A	B	C	D	Static load	Wheel Type	Fitting type	Swivel		Fittings available	
							Catalogue reference basic castor	Add to basic castor reference		
4" 100	134	91	35	225	NYLON	socket	SS4 100 NY04...	...SC1 ...SC6		
				225	RUBBER TYRED	socket	SS4 100 RU04...	...SC1 ...SC6		
				225	CAST IRON	socket	SS4 100 CI04...	...SC1 ...SC6		
5" 125	159	105	35	225	NYLON	socket	SS4 125 NY04...	...SC1 ...SC6		
				225	NYTHANE	plug	SS4 125 NY04...	...BP0 ...BP2 ...BX2		
				225	NYTHANE	socket	SS4 125 NT04...	...SC1 ...SC6		
6" 150	200	129	45	820	NYLON	socket	SS5 150 NY05...	...SC2 ...SC3 ...SC7 ...CS2		
				500	NYLON	plug	SS5 150 NY05...	...BP7 ...BP8		
				820	RUBBER TYRED	socket	SS5 150 RU05...	...SC2 ...SC3 ...SC7 ...CS2		
8" 200	244	154	45	820	NYTHANE	socket	SS5 150 NTOE...	...SC2 ...SC3 ...SC7 ...CS2		
				500	NYTHANE	plug	SS5 150 NTOE...	...BP7 ...BP8		
				820	RUBBER TYRED	socket	SS5 150 RU05...	...SC2 ...SC3 ...SC7 ...CS2		
8" 200	244	154	50	820	NYLON	socket	SS5 200 NY05...	...SC2 ...SC3 ...SC7 ...CS2		
				500	NYLON	plug	SS5 200 NY05...	...BP7 ...BP8		
				820	RUBBER TYRED	socket	SS5 200 RU05...	...SC2 ...SC3 ...SC7 ...CS2		
8" 200	244	154	50	820	RUBBER TYRED	plug	SS5 200 RU05...	...BP7 ...BP8		
				820	NYTHANE	socket	SS5 200 NTOE...	...SC2 ...SC3 ...SC7 ...CS2		
				500	NYTHANE	plug	SS5 200 NTOE...	...BP7 ...BP8		
8" 200	244	154	45	820	CAST IRON	socket	SS5 200 CI05...	...SC2 ...SC3 ...SC7 ...CS2		
				500	CAST IRON	plug	SS5 200 CI05...	...BP7 ...BP8		

Castor with plug type top fitting



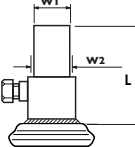
Fitting ref.	W	L
BP0	31.8 (1 1/4")	64
BP2	38.10 (1.51")	64
BX2	38.35 (1.51")	64
BP7	34.9 (1 3/2")	127
BP8	38.1 (1 1/2")	127

Castor with socket type top fitting



Fitting ref.	W	L
SC1	44.5 (1 3/4")	89
SC2	50.8 (2")	102
SC3	43.0 (1 11/16")	89
SC6	35.0 (1 3/8")	89
SC7	47.0 (1.85")	100

Castor with locking cup fitting.



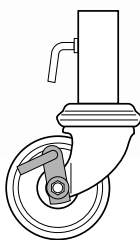
Fitting ref.	W1	W2	L
CS2	38	50.4	150



**WHEEL LOCK (W)**  
Fitted as standard

A simple hand operated parking lock

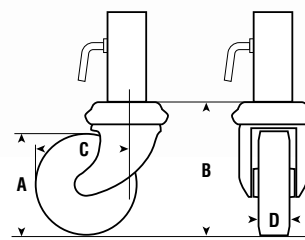
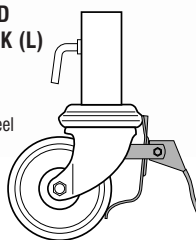
Add suffix **W** to catalogue reference



**SWIVEL AND WHEEL LOCK (L)**

The foot pedal locks both wheel & swivel

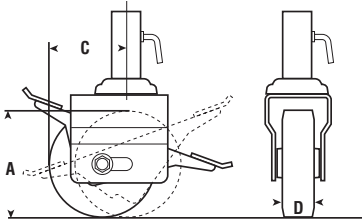
Add suffix **L** to catalogue reference





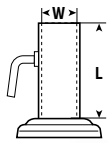
# SJE series

Zero offset scaffold castors, conform to DIN 4422: HD 1004: 1992 and BS 1139: part 3: 1994.



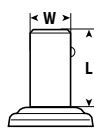
A	B	C	D	Static load	Wheel Type	Swivel	Fittings available	Brakes avl.
⊙	⌘	⌘	⌘	☐	— — — — —	☐	Insert into basic castor reference	Add to basic Castor ref.
5" 125	160	165	40	500	NYLON	☐	SJE 125 NY0G...	...SC2 ...B21 ...T33 BX4 B
				500	RUBBER TYRED	☐	SJE 125 RU0G...	...SC2 ...B21 ...T33 BX4 B
				600	NYTHANE	☐	SJE 125 NTOE...	...SC2 ...B21 ...T33 BX4 B
6" 150	190	165	45	820	NYLON	☐	SJE 150 NY05...	...SC2 ...B21 ...T33 BX4 B
				820	RUBBER TYRED	☐	SJE 150 RU05...	...SC2 ...BP2 ...T33 BX4 B
				600	NYTHANE	☐	SJE 150 NTOE..	...SC2 ...B21 ...T33 BX4 B
8" 200	240	165	50	820	NYLON	☐	SJE 200 NY05...	...SC2 ...B21 ...T33 BX4 B
				1000	NYLON	☐	SJE 200 NY0E...	...SC2 ...B21 ...T33 BX4 B
				820	RUBBER TYRED	☐	SJE 200 RU05...	...SC2 ...B21 ...T33 BX4 B
				820	NYTHANE	☐	SJE 200 NTOE...	...SC2 ...B21 ...T33 BX4 B

**Example:** An SJE scaffold castor with 200 diameter Nythane wheel, plug top fitting and a single pedal brake would have the reference **SJE 200 NTOE B21 BX4**



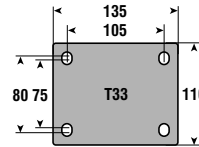
Castor with socket type top fitting

Fitting ref.	W	L
SC2	50.8 (2")	101



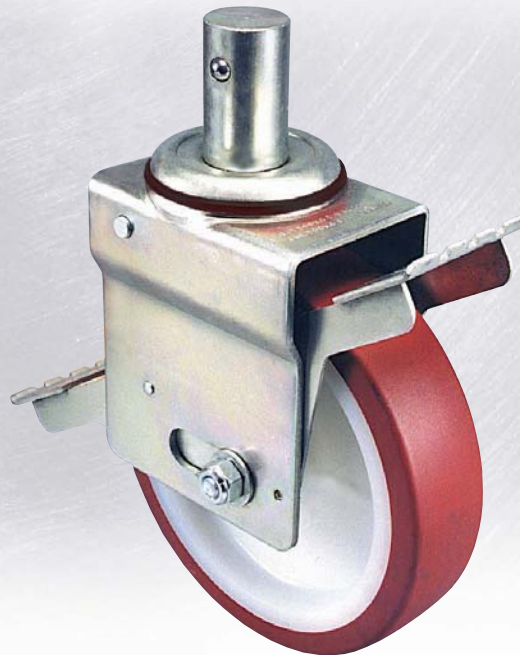
Castor with plug type top fitting

Fitting ref.	W	L
B21	38.3 (1.51")	52.5



Castor with top plate

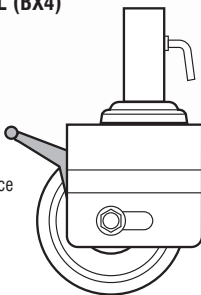
Fitting ref.	Holes suit bolt
T33	10



## SINGLE PEDAL (BX4)

A single ended operating pedal

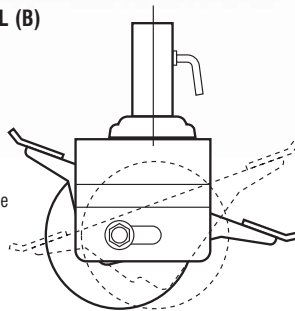
Add suffix **BX4** to catalogue reference



## DOUBLE PEDAL (B)

A double ended operating pedal

Add suffix **B** to catalogue reference



# SSD series

Scaffold castor with expander for loads up to 200kg to HD 1004, with integral swivel and wheel brake.

A	B	C	D	Static load	Wheel Type		Fitting type	Swivel	Expander Diameter
								Catalogue reference basic castor	
5" 125	160	144	35	200	NYLON		Nylon Expander	SSD 125 NY04 R22	47mm $\varnothing$
	160	144	35	200	NYTHANE		Nylon Expander	SSD 125 NT04 R22	47mm $\varnothing$
	160	144	35	200	NYLON		Nylon Expander	SSD 125 NY04 R23	38mm $\varnothing$
	160	144	35	200	NYTHANE		Nylon Expander	SSD 125 NT04 R23	38mm $\varnothing$

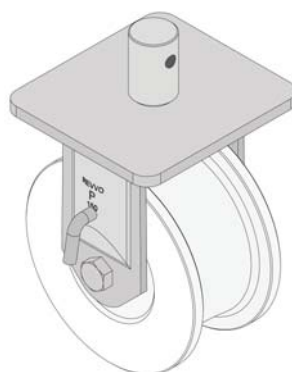
If locknut is required on nylon expander change castor reference from **SSD** to **XSD**



OTHER SPECIAL SCAFFOLDING APPLICATION CASTORS AVAILABLE. EXAMPLES BELOW. PLEASE ASK FOR DETAILS.



**XSK 200 NT2H B21S**  
HEAVY DUTY SCAFFOLD CASTOR








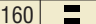
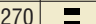
**XFP 145 CD2 R33W**  
SPECIAL CASTOR FOR ACCESS TOWERS USED ON RAILWAY TRACKS



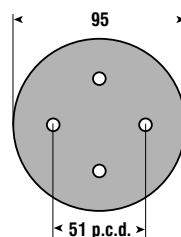
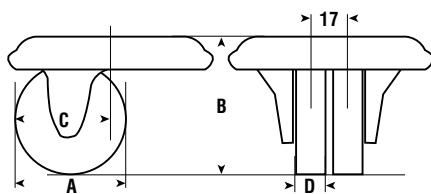
TEL +31(0)318 536611

# 2SL series

Low level twin wheel castors

A	B	C	D			Wheel type	Catalogue reference	
	Overall height	Swivel diameter						
2" 50	64	50	14	160		NYLON	2SL 050 NYOL	0.53
				160		REVVOTHANE	2SL 050 PTOL	0.76
				270		STEEL	2SL 050 STOL	0.76

The 2SL castor has a high load capacity in relation to its low overall height. This is due to the centre line of the wheels being within the circumference of the large diameter swivel bearing and the benefits of the differential action from the twin wheels. Best suited for use on hard/smooth floors.



2SL top plates have fixing holes to suit 6mm diameter countersink head screws



TEL +31(0)318 536611





Colson castors are universally recognised for being robust and durable. The kingpinless K, H, P, T, Y, and Z series all feature large diameter swivel bearings with either single or twin hardened steel raceways and hardened steel balls.

The G series has twin pressed steel ball races and the heavier duty X series has two sealed taper roller bearings.

On all Colson fabricated castors the heavy gauge steel legs are welded to the swivel head, in many cases by robot welding for accuracy and consistent quality.

There is an extensive choice of wheels including Revvothane 'Vulkollan' which can now be supplied from our in-house tyreing facility.



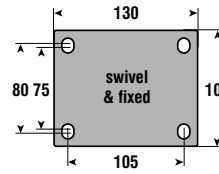


# TSG-TFG series

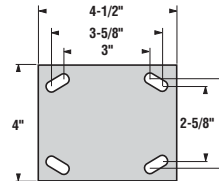
Medium heavy duty double ball race castors loads up to 600kg

A	B	C	D	Wheel Type	Swivel	Swivel		Fixed	
						Catalogue reference	Catalogue reference	Catalogue reference	Catalogue reference
4"100	140	83	38	150 RUBBER TYRED	TSG 100 RU1H	3.34	TFG 100 RU1H	2.58	
				35 225 NYLON	TSG 100 NY0G	2.37	TFG 100 NY0G	1.34	
				45 320 CAST IRON	TSG 100 C10G	2.60	TFG 100 C10G	2.13	
				45 320 CAST IRON	TSG 100 C11H	2.99	TFG 100 C11H	2.43	
				5"125	165	102	40 170 RUBBER TYRED	TSG 125 RU0G	3.42
40 170 RUBBER TYRED	TSG 125 RU1H	3.50	TFG 125 RU1H	2.74					
45 250 NYTHANE	TSG 125 NT0E	2.20	TFG 125 NT0E	1.80					
38 320 REVVOTHANE	TSG 125 PT1H	3.50	TFG 125 PT1H	3.10					
40 330 NYLON	TSG 125 NY0G	2.59	TFG 125 NY0G	1.55					
6"150	190	120	40 330 NYLON	TSG 125 NY1G	2.60	TFG 125 NY1G	1.58		
			45 600 CAST IRON	TSG 125 C10G	3.71	TFG 125 C10G	3.25		
			45 600 CAST IRON	TSG 125 C11H	3.81	TFG 125 C11H	3.37		
			45 370 RUBBER TYRED	TSG 150 RU05	4.60	TFG 150 RU05	3.42		
			45 370 RUBBER TYRED	TSG 150 RU15	4.66	TFG 150 RU15	3.87		
			45 385 NYTHANE	TSG 150 NT0E	2.50	TFG 150 NT0E	2.05		
			45 500 NYLON	TSG 150 NY05	2.73	TFG 150 NY05	1.69		
			40 500 NYLON	TSG 150 NY15	2.98	TFG 150 NY15	1.87		
			38 600 REVVOTHANE	TSG 150 PT15	5.07	TFG 150 PT15	4.63		
			45 600 CAST IRON	TSG 150 C105	4.31	TFG 150 C105	3.87		
8"200	241	154	45 600 CAST IRON	TSG 150 C115	4.38	TFG 150 C115	3.94		
			50 535 RUBBER TYRED	TSG 200 RU05	5.05	TFG 200 RU05	4.25		
			50 535 RUBBER TYRED	TSG 200 RU15	5.08	TFG 200 RU15	4.28		
			50 450 NYTHANE	TSG 200 NT0E	2.85	TFG 200 NT0E	2.40		
			50 500 NYLON	TSG 200 NY05	3.10	TFG 200 NY05	2.05		
			50 500 NYLON	TSG 200 NY15	3.20	TFG 200 NY15	2.25		
			45 600 REVVOTHANE	TSG 200 PT15	6.54	TFG 200 PT15	6.04		
			45 600 CAST IRON	TSG 200 C105	6.01	TFG 200 C105	5.67		
			45 600 CAST IRON	TSG 200 C115	6.08	TFG 200 C115	5.72		

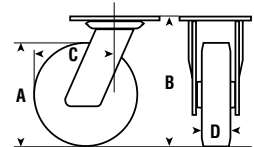
The G series top plate fixing castor provides a bridge between pressed steel and the more robust fabricated range.



TSG/TFG top plates have fixing holes to suit 10mm diameter bolts



Alternative Top Plate  
Add suffix T00 to catalogue reference.  
Holes to suit 3/8" bolts

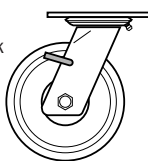


TOP PLATE THICKNESS  
6mm



**WHEEL LOCK (W)**  
Swivel castors only

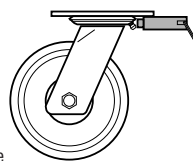
A simple hand operated parking lock



Add suffix **W** to catalogue reference

**DIRECTIONAL LOCK ATTACHMENT (D)**  
Swivel castors only

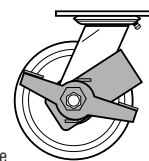
A two-station directional lock converting swivel castors into fixed for straight line travel



Add suffix **D** to catalogue reference

**FOOTBRAKE (B)**  
Except cast iron wheel, swivel castors only

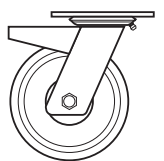
The foot operated pedal locks wheel



Add suffix **B** to catalogue reference

**SWIVEL AND WHEEL LOCK (L)**  
150, 200mm swivel castors only

The foot operated brake simultaneously brakes both the swivel head and the wheel. Release is effected by the trip pedal.



Add suffix **L** to catalogue reference

The swivel radius is increased as follows:  
150mm dia. - 153.5mm  
200mm dia. - 156.5mm

N.B. Ensure when fitting this castor that the fixing bolts are fitted upwards to eliminate any possibility of interference to the brake mechanism.



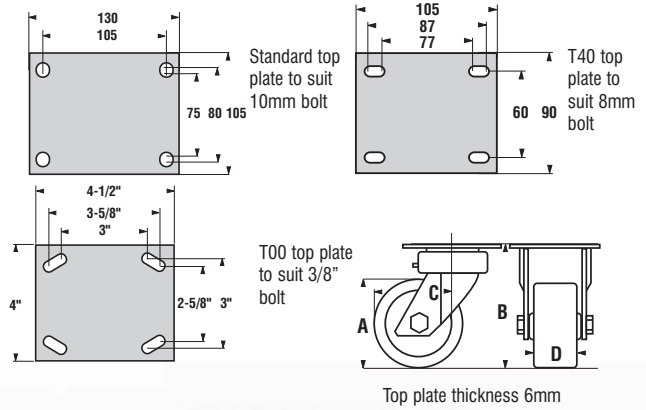
# TSK-TFK series

Kingpinless castors for loads up to 1000kg

A	B	C	D	Wheel Type	Swivel	Swivel		Fixed			
						Catalogue reference	Catalogue reference	Catalogue reference	Catalogue reference		
4"100	142	89	38	150 RUBBER TYRED	TSK 100 RU1H	3.29	TFK 100 RU1H	2.58			
				340 REVVOTHANE	TSK 100 PT1H	3.65	TFK 100 PT1H	2.92			
				340 REVVOTHANE	TSK 100 PT2H	3.67	TFK 100 PT2H	2.94			
				320 CAST IRON	TSK 100 C11H	3.14	TFK 100 C11H	2.43			
				45 170 RUBBER TYRED	TSK 125 RU1H	3.45	TFK 125 RU1H	2.74			
5"125	165	115	42 200 GREEN RUBBER	TSK 125 GR2H	2.90	TFK 125 GR2H	2.19				
			45 250 NYTHANE	TSK 125 NT2H	2.61	TFK 125 NT2H	1.90				
			38 425 REVVOTHANE	TSK 125 PT1H	3.81	TFK 125 PT1H	3.10				
			38 425 REVVOTHANE	TSK 125 PT2H	3.81	TFK 125 PT2H	3.10				
			40 330 NYLON	TSK 125 NY1G	2.06	TFK 125 NY1G	1.35				
			45 630 CAST IRON	TSK 125 CH1H	4.08	TFK 125 CH1H	3.37				
			6"150	191	130	45 300 NYTHANE	TSK 150 NT25	2.86	TFK 150 NT25	2.15	
			42 300 GREEN RUBBER	TSK 150 GR2H	3.40	TFK 150 GR2H	2.39				
45 370 RUBBER TYRED	TSK 150 RU15	4.58	TFK 150 RU1H	3.87							
40 500 NYLON	TSK 150 NY15	2.10	TFK 150 NY15	1.39							
50 800 NYLON	TSK 150 NY2H	2.38	TFK 150 NY2H	1.67							
38 730 REVVOTHANE	TSK 150 PT15	5.34	TFK 150 PT15	4.63							
38 730 REVVOTHANE	TSK 150 PT2H	5.34	TFK 150 PT2H	4.63							
45 910 CAST IRON	TSK 150 CH15	4.65	TFK 150 CH15	3.94							
8"200	241	155	50 400 NYTHANE	TSK 200 NT2H	3.46	TFK 200 NT2H	2.60				
			42 400 GREEN RUBBER	TSK 200 GR2H	3.62	TFK 200 GR2H	2.76				
			50 500 NYLON	TSK 200 NY15	2.96	TFK 200 NY15	2.10				
			50 535 RUBBER TYRED	TSK 200 RU15	5.14	TFK 200 RU15	4.28				
			45 1000 REVVOTHANE	TSK 200 PT15	5.90	TFK 200 PT15	5.04				
			45 1000 REVVOTHANE	TSK 200 PT2H	5.90	TFK 200 PT2H	5.94				
			45 1000 CAST IRON	TSK 200 CH15	6.58	TFK 200 CH15	5.72				

The 'K' series is designed as a compact medium/heavy duty castor, the robust fabricated frame gives improved turning, greater impact resistance and better tracking.

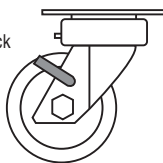
The machined kingpinless swivel head contains a full ballrace of 60mm diameter with hardened steel balls running in hardened raceways.



## WHEEL LOCK (W)

Swivel castors only  
A simple hand operated parking lock

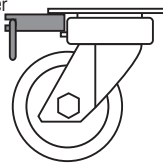
Add suffix **W** to catalogue reference



## 2-WAY DIRECTIONAL LOCK (D)

Swivel castors only  
A two-station plunger converting swivel castors into fixed for straight line travel

Add suffix **D** to catalogue reference

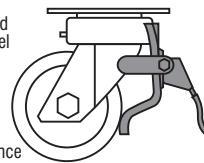


## FOOTBRAKE (B)

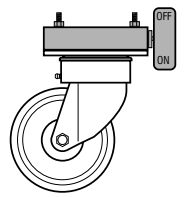
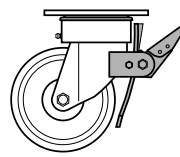
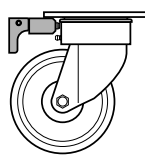
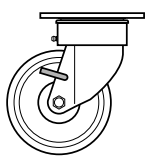
125, 150 and 200mm swivel castors only  
(not available with all wheels, please check)

The foot operated pedal locks wheel

Add suffix **B** to catalogue reference

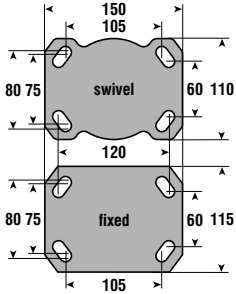
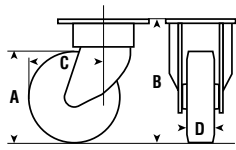






# TSH-TFH series

Loads up to 1500 kg



When fitting at 120 x 60mm hole centres use 12mm diameter bolts

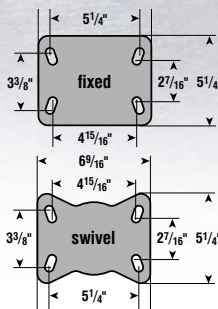
When fitting at 105 x 80/75mm hole centres use 10mm diameter bolts

## TOP PLATE THICKNESS

Swivel castor 7mm  
Fixed castor 6.5mm



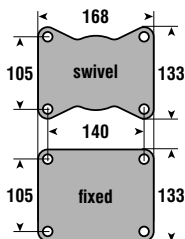
## T24 IMPERIAL TOP PLATE



Alternative top plate. Fixing holes to suit 1/2" diameter bolt.

Add suffix T24 to catalogue reference

## T05 TOP PLATE



Alternative top plate. Fixing holes to suit 12mm diameter bolt

Add suffix T05 to catalogue reference

A	B	C	D	Wheel Type	Swivel	Fixed						
						Catalogue reference	Catalogue reference					
4"	100	152	102	38 150 RUBBER TYRED	TSH 100 RU1H	4.04	TFH 100 RU1H	3.34				
				38 340 REVVOTHANE	TSH 100 PT1H	4.20	TFH 100 PT1H	3.40				
				38 340 REVVOTHANE	TSH 100 PT2H	4.24	TFH 100 RU2H	3.50				
				40 500 REVVOTHANE*	TSH 100 40PT2	4.34	TSF 100 40PT2	3.60				
				45 320 CAST IRON	TSH 100 C11H	4.11	TFH 100 C11H	3.41				
5"	125	177	118	40 170 RUBBER TYRED	TSH 125 RU1H	4.44	TFH 125 RU1H	3.68				
				40 170 RUBBER TYRED	TSH 125 RU2H	4.53	TFH 125 RU2H	3.84				
				57 250 NYTHANE	TSH 125 NT2H	3.51	TFH 125 NT2H	3.11				
				38 320 REVVOTHANE	TSH 125 PT1H	4.26	TFH 125 PT1H	3.51				
				38 425 REVVOTHANE	TSH 125 PT2H	4.31	TFH 125 PT2H	3.70				
				45 600 REVVOTHANE*	TSH 125 45PT2	4.43	TFH 125 45PT2	3.82				
				45 630 CAST IRON	TSH 125 C11H	4.58	TFH 125 C11H	3.82				
				6"	150	202	134	42 300 GREEN RUBBER	TSH 150 GR2H	3.45	TFH 150 GR2H	3.00
								57 300 NYTHANE	TSH 150 NT25	3.80	TFH 150 NT25	3.40
45 370 RUBBER TYRED	TSH 150 RU15	4.89	TFH 150 RU15					4.07				
40 370 RUBBER TYRED	TSH 150 RU2H	4.95	TFH 150 RU2H					4.12				
38 730 REVVOTHANE	TSH 150 PT15	5.25	TFH 150 PT15					4.43				
38 730 REVVOTHANE	TSH 150 PT2H	5.36	TFH 150 PT2H					4.54				
50 900 REVVOTHANE	TSH 150 50PT2	5.50	TFH 150 50PT2					4.68				
50 800 NYLON	TSH 150 NY2H	3.00	TFH 150 NY2H					2.56				
45 910 CAST IRON	TSH 150 C115	5.21	TFH 150 C115					4.37				
45 910 CAST IRON	TSH 150 C12H	5.24	TFH 150 C12H					4.40				
50 1130 STEEL	TSH 150 S12H	8.98	TFH 150S12H					8.16				
6 1/4	160	207	139					42 300 GREEN RUBBER	TSH 160 GR2H	3.51	TFH 160 GR2H	3.06
8"	200	252	166					42 400 GREEN RUBBER	TSH 200 GR2H	3.85	TFH 200 GR2H	3.40
								57 400 NYTHANE	TSH 200 NT2H	4.20	TFH 200 NT2H	3.79
								50 535 RUBBER TYRED	TSH 200 RU15	6.52	TFH 200 RU15	5.62
				50 535 RUBBER TYRED	TSH 200 RU2H	6.79	TFH 200 RU2H	5.90				
				45 1150 CAST IRON	TSH 200 C115	7.01	TFH 200 C115	6.16				
				45 1150 CAST IRON	TSH 200 C12H	7.11	TFH 200 C12H	6.21				
				45 1100 REVVOTHANE	TSH 200 PT15	7.01	TFH 200 PT15	6.11				
				45 1100 REVVOTHANE	TSH 200 PT2H	7.10	TFH 200 PT2H	6.20				
				57 1300 REVVOTHANE	TSH 200 PT2A	7.30	TFH 200 PT2A	6.40				
				50 1500 NYLON	TSH 200 NY2H	3.51	TFH 200 NY2H	3.16				
				10"	250	303	207	42 500 GREEN RUBBER	TSH 250 GR2H	4.71	TFH 250 GR2H	4.46
54 615 RUBBER TYRED	TSH 250 RU1H	10.30	TFH 250 RU1H					9.72				
54 615 RUBBER TYRED	TSH 250 RU2H	10.50	TFH 250 RU2H					9.92				
54 1240 CAST IRON	TSH 250 C11H	10.60	TFH 250 C11H					10.02				
45 1240 CAST IRON	TSH 250 C12H	10.75	TFH 250 C12H					10.17				
45 1200 REVVOTHANE	TSH 250 PT1H	9.71	TFH 250 PT1H					9.12				
45 1200 REVVOTHANE	TSH 250 PT2H	9.73	TFH 250 PT2H					9.15				
57 1500 REVVOTHANE	TSH 250 PT2A	11.00	TFH 250 PT2A					10.40				
60 1500 NYLON	TSH 250 NY2H	4.21	TFH 250 NY2H					3.76				
12"	300	353	245					54 680 RUBBER TYRED	TSH 300 RU1H	13.04	TFH 300 RU1H	12.49
				54 680 RUBBER TYRED	TSH 300 RU2H	13.19	TFH 300 RU2H	12.65				
				45 1400 REVVOTHANE	TSH 300 PT1H	12.03	TFH 300 PT1H	11.49				
				45 1400 REVVOTHANE	TSH 300 PT2H	12.05	TFH 300 PT2H	11.51				
				57 1500 REVVOTHANE	TSH 300 PT2C	12.55	TFH 300 PT2C	12.01				

\*Using wheels from the PT designer range

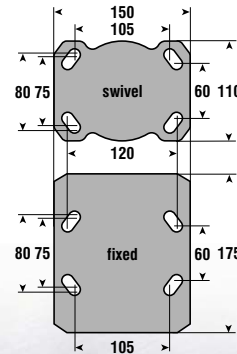
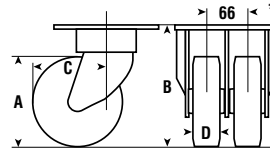
# 2SH-2FH series

Twin wheel castors for loads up to 1500kg

A	B	C	D	Wheel Type	Swivel	Swivel		Fixed	
						Catalogue reference	Weight	Catalogue reference	Weight
5"125	177	125	38	720 REVVOTHANE	Swivel	2SH 125 PT1H	6.69	2FH 125 PT1H	6.18
				720 REVVOTHANE	Fixed	2SH 125 PT2H	6.76	2FH 125 PT2H	6.21
				1020 REVVOTHANE	Swivel	2SH 125 45PT2	7.00	2FH 125 45PT2	6.45
				945 CAST IRON	Swivel	2SH 125 C11H	7.52	2FH 125 C11H	6.80
				945 CAST IRON	Fixed	2SH 125 C12H	7.68	2FH 125 C12H	6.87
6"150	202	140	38	1240 REVVOTHANE	Swivel	2SH 150 PT1H	9.66	2FH 150 PT1H	9.00
				1240 REVVOTHANE	Fixed	2SH 150 PT2H	9.76	2FH 150 PT2H	9.11
				1500 REVVOTHANE	Swivel	2SH 150 50PT2	10.00	2FH 150 50PT2	9.35
				1360 NYLON	Swivel	2SH 150 NY2H	4.90	2FH 150 NY2H	4.45
				1365 CAST IRON	Swivel	2SH 150 C115	9.00	2FH 150 C115	8.20
8"200	252	170	45	1500 REVVOTHANE	Swivel	2SH 200 PT1H	11.85	2FH 200 PT1H	11.00
				1500 REVVOTHANE	Fixed	2SH 200 PT2H	11.90	2FH 200 PT2H	11.03
				1500 NYLON	Swivel	2SH 200 NY2H	7.00	2FH 200 NY2H	6.62
				1500 CAST IRON	Swivel	2SH 200 C115	11.92	2FH 200 C115	11.05
				1500 CAST IRON	Fixed	2SH 200 C12H	11.95	2FH 200 C12H	11.08

Utilising the dependable 'H' series kingpinless swivel head these twin wheel castors provide a larger 'footprint' and easier turning due to the differential action of the wheels. All this within a compact overall height

Maximum towing speed 6 kph



When fitting at 120 x 60mm hole centres use 12mm diameter bolts

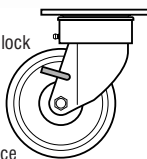
When fitting at 105 x 80/75mm hole centres use 10mm diameter bolts  
Top Plate Thickness Swivel 7mm Fixed 6.5mm



### TWIN WHEEL LOCKS (W)

Swivel castors only

Simple hand operated parking lock

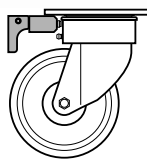


Add suffix **W** to catalogue reference

### DIRECTIONAL LOCK (D)

Swivel castors only

A four-station plunger lock converting swivel castors into fixed for straight line travel

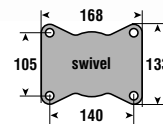


Add suffix **D** to catalogue reference

### T05 TOP PLATE

Swivel castors only

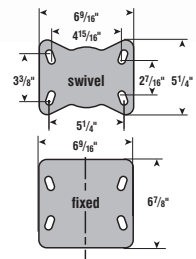
Alternative top plate. Fixing holes to suit 12mm diameter bolt



Add suffix **T05** to catalogue reference

### T24 IMPERIAL TOP PLATE

Alternative top plate. Fixing holes to suit 1/2" diameter bolt.



Add suffix **T24** to catalogue reference



TEL +31(0)318 536611



# Special application H series

## RSH series with extra offset

A	B	C	D	Wheel Type	H	Swivel		Fixed	
						Catalogue reference	Weight	Catalogue reference	Weight
6" 150	202	140	38	410	REVVO	RSH 150 PT2S	4.90	TFH 150 PT2S	4.43
8" 200	252	185	38	450	REVVO	RSH 200 PT2S	5.95	TFH 200 PT2S	5.15

## RSH

Special extra offset H series castor for extra manoeuvrability. Fitted with special 80° shore A 34 mm thick polyurethane tyre. To reduce noise in power towing applications, other wheels are available.

Maximum towing speed 6 kph

## MSH series with heavy gauge sideplates

A	B	C	D	Wheel Type	H	Swivel		Fixed	
						Catalogue reference	Weight	Catalogue reference	Weight
8" 200	250	166	45	1100	REVVO	MSH 200 PT2H	6.92	MFH 200 PT2H	6.00
	250	166	57	1300	REVVO	MSH 200 PT2A	7.12	MFH 200 PT2A	6.20

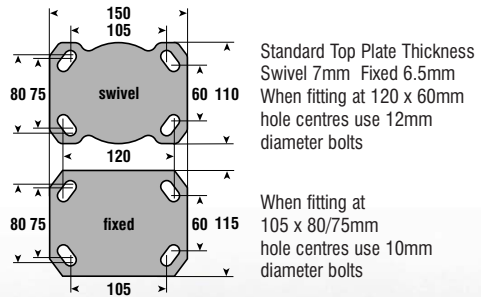
## MSH

Special H series with 8mm thick braced forks to withstand heavy side impact under power towing conditions.

Maximum towing speed 6 kph

## XSH-XFH Low level castors

A	B	C	D	Wheel Type	H	Swivel		Fixed	
						Catalogue reference	Weight	Catalogue reference	Weight
85	144	100	75	410	NYLON	XSH 085 NY2MZ	2.49	XFH 085 NY2M	
			600	REVVO		XSH 085 PT2MZ	3.01	XFH 085 PT2M	

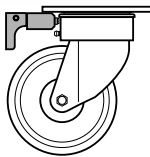


### DIRECTIONAL LOCK (D)

Swivel castors only

A four-station plunger lock converting swivel castors into fixed for straight line travel

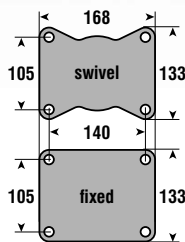
Add suffix **D** to catalogue reference



### T05 TOP PLATE

Alternative top plate. Fixing holes to suit 12mm diameter bolt

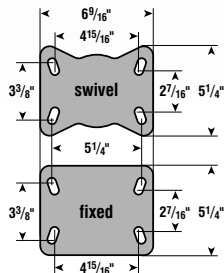
Add suffix **T05** to catalogue reference



### T24 IMPERIAL TOP PLATE

Alternative top plate. Fixing holes to suit 1/2" diameter bolt.

Add suffix **T24** to catalogue reference



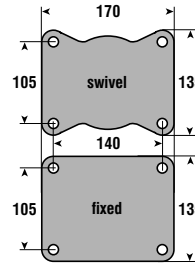
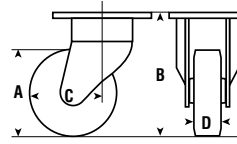
# TSP-TFP series

Kingpinless heavy duty castors loads up to 2000kg

A	B	C	D	Wheel Type	Swivel/Fixed	Swivel		Fixed	
						Catalogue reference	Weight	Catalogue reference	Weight
6"	150	213	134	40 370 RUBBER TYRED	Swivel	TSP 150 RU2H	6.78	TFP 150 RU2H	5.48
				38 730 REVVOHANE	Swivel	TSP 150 PT2H	7.33	TFP 150 PT2H	5.85
				50 900 REVVOHANE	Swivel	TSP 150 50PT2	7.40	TFP 150 50PT2	5.90
				45 910 CAST IRON	Swivel	TSP 150 C12H	7.10	TFP 150 C12H	5.81
				55 2000 STEEL	Swivel	TSP 150 STTP	11.11	TFP 150 STTP	9.63
8"	200	264	172	50 535 RUBBER TYRED	Swivel	TSP 200 RU2H	8.63	TFP 200 RU2H	7.18
				45 1150 CAST IRON	Swivel	TSP 200 C12H	8.95	TFP 200 C12H	7.49
				45 1100 REVVOHANE	Swivel	TSP 200 PT2H	8.85	TFP 200 PT2H	7.39
				57 1300 REVVOHANE	Swivel	TSP 200 PT2A	8.90	TFP 200 PT2A	7.44
				60 1500 NYLON	Swivel	TSP 200 NY2H	6.66	TFP 200 NY2H	5.20
10"	250	314	207	54 615 RUBBER TYRED	Swivel	TSP 250 RU2H	11.84	TFP 250 RU2H	10.40
				54 1240 CAST IRON	Swivel	TSP 250 C12H	12.14	TFP 250 C12H	11.70
				45 1200 REVVOHANE	Swivel	TSP 250 PT2H	11.24	TFP 250 PT2H	9.81
				57 1500 REVVOHANE	Swivel	TSP 250 PT2A	12.49	TFP 250 PT2A	8.56
				60 2000 NYLON	Swivel	TSP 250 NY2H	7.50	TFP 250 NY2H	6.07
12"	300	365	245	54 680 RUBBER TYRED	Swivel	TSP 300 RU2H	14.87	TFP 300 RU2H	13.39
				45 1400 REVVOHANE	Swivel	TSP 300 PT2H	13.70	TFP 300 PT2H	12.22
				57 1800 REVVOHANE	Swivel	TSP 300 PT2C	18.50	TFP 300 PT2C	17.02

Designed for tow trailer applications, the kingpinless head features two large diameter hardened ball races

Maximum towing speed 6 kph



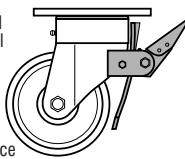
Top plate thickness 10mm  
Fixing holes to suit 12mm bolts



**FOOTBRAKE (B)**  
Swivel castors only

The foot operated pedal locks wheel

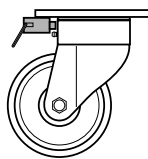
Add suffix **B** to catalogue reference



**DIRECTIONAL LOCK (D)**  
Swivel castors only

A four-station plunger lock converting swivel castors into fixed for straight line travel

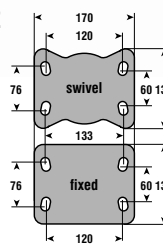
Add suffix **D** to catalogue reference



**XP3 TOP PLATE**

Alternative top plate. Fixing holes to suit 12mm diameter bolt

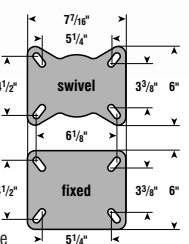
Add suffix **XP3** to catalogue reference



**T22 IMPERIAL TOP PLATE**

Alternative top plate. Fixing holes to suit 1/2" diameter bolt. Overall height is increased by 1/8"

Add suffix **T22** to catalogue reference



# WSP-WFP & XSP-XFP series

Kingpinless heavy duty castors loads up to 2000kg

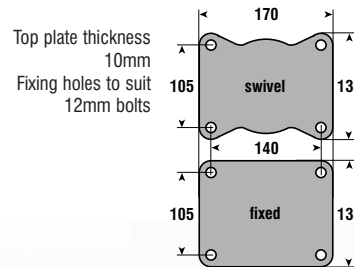
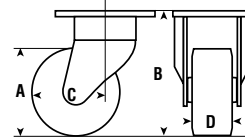
## WSP WFP series

A	B	C	D	Wheel Type	Speed (kph)	Swivel		Fixed	
						Catalogue reference	Catalogue reference	Catalogue reference	Catalogue reference
8" 200	264	172	75	1800	REVVOHANE	WSP 200 PT2P	12.75	WFP 200 PT2P	11.08
10" 250	314	207	75	2000	REVVOHANE	WSP 250 PT2P	16.54	WFP 250 PT2P	14.66
12" 300	365	245	75	2000	REVVOHANE	WSP 300 PT2P	28.01	WFP 300 PT2P	24.06

Designed to accommodate wider wheels than the standard 'P' series.

## XSP-XFP series (with demountable rubber tyre)

A	B	C	D	Load capacity		Speed (kph)	Wheel Type	Swivel		Fixed	
				Speed (kph)	Load capacity			Catalogue reference	Catalogue reference	Catalogue reference	Catalogue reference
8" 200	264	172	75	6	500	6	REVVOHANE	XSP 200 DR2X	8.50	XFP 200 DR2X	7.10
				10	400						
				16	300						
				20	250						
10" 250	314	207	80	6	675	10	REVVOHANE	XSP 250 DR2X	16.87	XFP 250 DR2X	13.15
				10	540						
				16	410						
				20	340						
12" 300	365	245	85	6	800	12	REVVOHANE	XSP 300 DR2X	26.10	XFP 300 DR2X	19.50
				10	640						
				16	480						
				20	400						

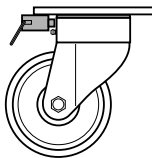


### DIRECTIONAL LOCK (D)

Swivel castors only

A four-station plunger lock converting swivel castors into fixed for straight line travel

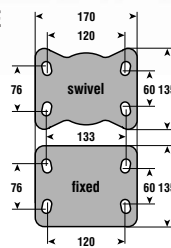
Add suffix **D** to catalogue reference



### XP3 TOP PLATE

Alternative top plate. Fixing holes to suit 12mm diameter bolt

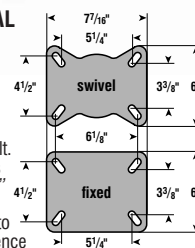
Add suffix **XPS** to catalogue reference



### T22 IMPERIAL TOP PLATE

Alternative top plate. Fixing holes to suit 1/2" diameter bolt. Overall height is increased by 1/8"

Add suffix **T22** to catalogue reference

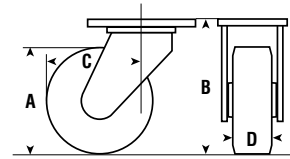




# TST-TFT/XST-XFT series

Heavy duty kingpinless castors for loads up to 5080kg

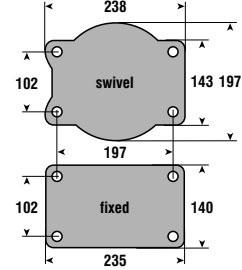
A	B	C	D	Wheel Type	Swivel	Swivel		Fixed	
						Catalogue reference	Weight	Catalogue reference	Weight
6" 150	202	188	63	2270	STEEL	TST 150 STTT	19.81	TFT 150 STTT	13.63
8" 200	252	213	75	1800	REVVOHANE	TST 200 PTTT	20.60	TFT 200 PTTT	13.30
	278	187	85	5080	STEEL	XST 200 ST3T	33.64	XFT 200 ST3T	33.21
10" 250	303	238	63	2270	CAST IRON	TST 250 CIPT	25.70	TFT 250 CIPT	16.40
			75	2500	REVVOHANE	TST 250 PTTT	26.52	TFT 250 PTTT	17.19
12" 300	354	264	75	2750	REVVOHANE	TST 300 PTTT	29.10	TFT 300 PTTT	22.19
16" 400	473	318	100	1700	RUBBER TYRED	XST 400 RUTT	49.61	XFT 400 RUTT	44.00
			100	4500	REVVOHANE	XST 400 PTTT	53.40	XFT 400 PTTT	47.80



Fixing holes to suit 16mm diameter bolts

Top Plate Thickness

Swivel 30mm  
Fixed 10mm



The 'T' series range is designed for use in adverse conditions with heavy loading, poor floor conditions and shock loading. The Revvohane tyred wheels use Vulkollan polyurethane

Maximum towing speed 6 kph

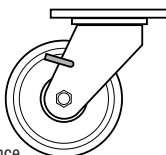


### WHEEL LOCK (W)

Swivel castors only

A simple hand operated parking lock

Add suffix **W** to catalogue reference

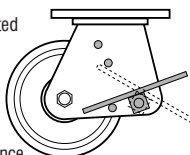


### FOOTBRAKE (B)

Swivel castors only, except XST and 150 wheel

The foot operated pedal locks wheel

Add suffix **B** to catalogue reference

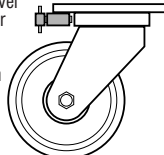


### DIRECTIONAL LOCK (D)

Swivel castors only

A four-station plunger lock converting swivel castors into fixed for straight line travel. Overall height is increased by 37mm on TST and 21mm on XST Series

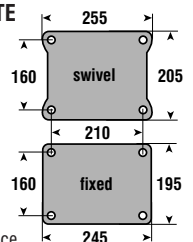
Add suffix **D** to catalogue reference



### T06 TOP PLATE

Alternative top plate. Fixing holes to suit 16mm diameter bolt.

Add suffix **T06** to catalogue reference



TEL +31 (0)318 536611

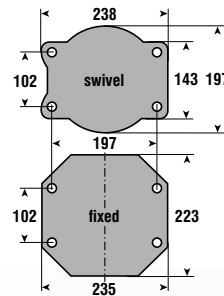
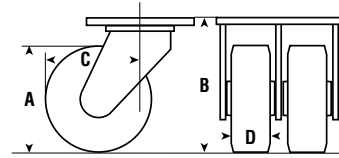
# 2ST-2FT series

Heavy duty twin wheel castors loads up to 4675kg

A	B	C	D	Wheel Type	Swivel/Fixed	Swivel		Fixed	
						Catalogue reference	Weight	Catalogue reference	Weight
8" 200	268	232	75	3060	REVVOHANE	2ST 200 PTTC	33.35	2FT 200 PTTC	27.06
10" 250	319	254	75	4250	REVVOHANE	2ST 250 PTTC	40.17	2FT 250 PTTC	31.00
12" 300	369	279	75	4675	REVVOHANE	2ST 300 PTTB	49.40	2FT 300 PTTB	40.55

These twin wheel castors are based on the 'T' series swivel design. Using two wheels allows heavier loads without increasing the wheel diameter and still retains a compact overall height. The Revvothane tyre wheels use Vulkollan® Polyurethane.

Maximum towing speed 6 kph



Top plate thickness  
Swivel 30mm  
10mm fixed

Fixing holes to suit 16mm diameter bolts

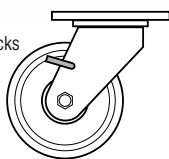


## WHEEL LOCKS (W)

Swivel castors only

A simple hand operated parking locks

Add suffix **W** to catalogue reference

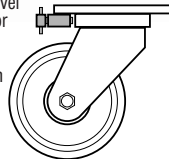


## DIRECTIONAL LOCK (D)

Swivel castors only

A four-station plunger lock converting swivel castors into fixed for straight line travel. Overall height is increased by 26mm

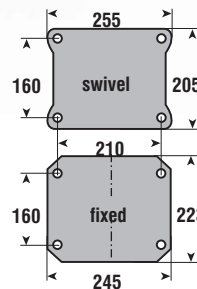
Add suffix **D** to catalogue reference



## T06 TOP PLATE











Alternative top plate. Fixing holes to suit 16mm diameter bolt.

Add suffix **T06** to catalogue reference



# TSX-TFX & XSX-XFX series

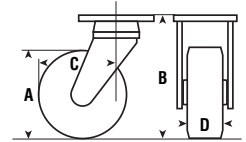
All steel heavy duty castors tow trail loads up to 2750kg

A	B	C	D	Load Capacity 				Wheel Type	Swivel		Fixed		
				6kph	10kph	16kph	20kph		Catalogue reference		Catalogue reference		
8" 200	278	176	75	500	400	300	250	DEMOUNTABLE RUBBER		XSX 200 DR2X	10.50	XFX 200 DR2X	9.10
			75	1800	1440	1000	720	REVVOHANE		TSX 200 PTTT	14.50	TFX 200 PTTT	13.67
10" 250	328	202	80	675	540	410	340	DEMOUNTABLE RUBBER		XSX 250 DR2X	18.87	XFX 250 DR2X	15.15
			75	1020				RUBBER TYRED		TSX 250 RUTT	17.53	TFX 250 RUTT	15.70
			75	2500	2000	1400	1000	REVVOHANE		TSX 250 PTTT	19.25	TFX 250 PTTT	17.40
12" 300	379	251	85	800	640	480	400	DEMOUNTABLE RUBBER		XSX 300 DR2X	28.10	XFX 300 DR2X	21.50
			75	2750	2200	1540	1100	REVVOHANE		TSX 300 PTTT	24.6	TFX 300 PTTT	22.00

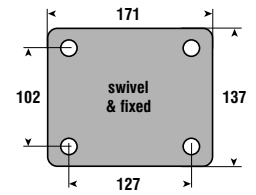
### Swivel castors

X Series castors are made to withstand severe conditions of power towing. The swivel is fitted with sealed taper roller bearings and is fully adjustable without removal of the castor from the trailer.

**TOP PLATE THICKNESS**  
Swivel castor 14mm  
Fixed castor 12.5mm



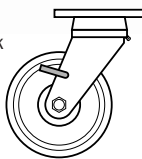
TSX/TFX top plates have fixing holes to suit 16mm diameter bolts



### WHEEL LOCK (W)

Swivel castors only

A simple hand operated parking lock

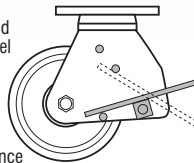


Add suffix **W** to catalogue reference

### FOOTBRAKE (B)

Swivel castors only

The foot operated pedal locks wheel

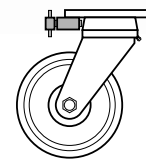


Add suffix **B** to catalogue reference

### DIRECTIONAL LOCK (D)

Swivel castors only

A four-station plunger lock converting swivel castors into fixed for straight line travel



Add suffix **D** to catalogue reference



TEL +31 (0)318 536611



# Shear Disc Series

## XSX-XFX XST-XFT

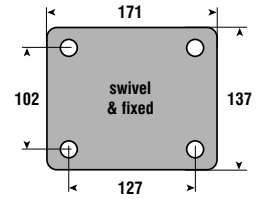
### XSX-XFX Special X Series castors with shear discs

A	B	C	D	X	Stop dist.	Wheel Type	Swivel	Fixed		
								Catalogue reference	Catalogue reference	
8" 200	295	176	75	12.7	680	REVVOHANE	XSX 200 PTTT X	20.60	XFX 200 PTTT X	13.38
10" 250	345	202	75	12.7	680	REVVOHANE	XSX 250 PTTT X	26.52	XFX 250 PTTT X	17.14

Top plate thickness

XSX Swivel castor 14mm  
Fixed castor 12.5mm

XST Swivel castor 30mm  
Fixed castor 10 mm



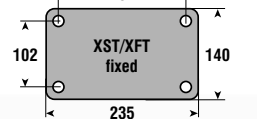
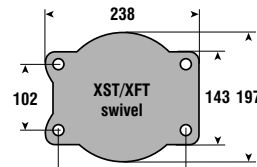
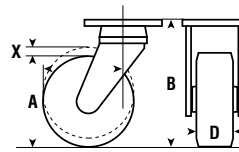
XSX/XFX & XST/XFT top plates have fixing holes to suit 16mm diameter bolts

Special braked shear disc castors are available:

- XFX 250 PT2C X Overall height: 323mm
- XFX 250 PT2D X Overall height: 323mm
- XFX 250 PT2L X Overall height: 290mm
- XFX 250 PT2M X Overall height: 290mm

### XST Special T Series castors with shear discs

A	B	C	D	X	Stop dist.	Wheel Type	Swivel	
							Catalogue reference	Catalogue reference
8" 200	265	213	75	12.7	680	REVVOHANE	XST 200 PTTT X	20.20
10" 250	350	238	75	12.7	680	REVVOHANE	XST 250 PTTT X	28.52



Special XFT braked castors are available, ask for details.

### Shear disc assemblies

Both the X and T series castors can be manufactured with rubber shear discs between the axle and leg forks. The effect is to dampen shock loads between the wheels and the chassis.

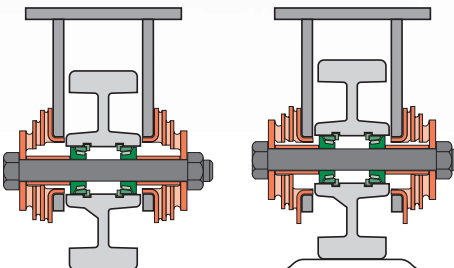
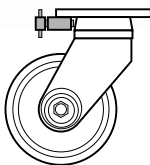


### DIRECTIONAL LOCK (D)


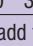
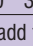






Swivel castors only

A four-station plunger lock converting swivel castors into fixed for straight line travel. Overall height of the XST would increase by 37mm

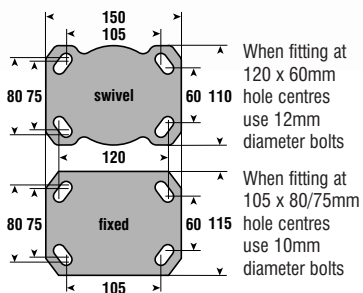
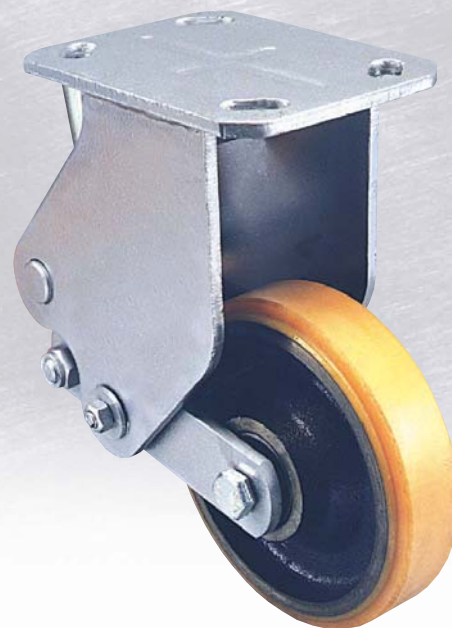
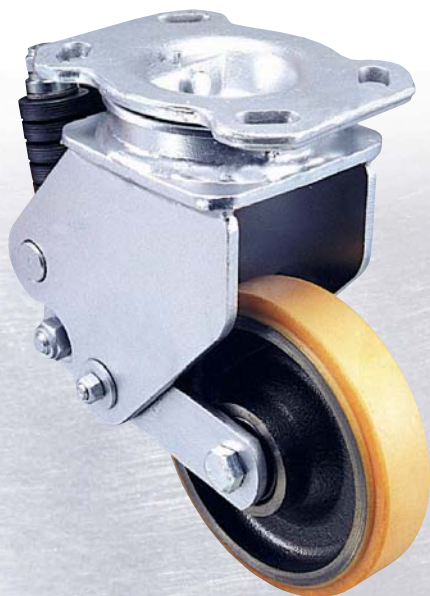
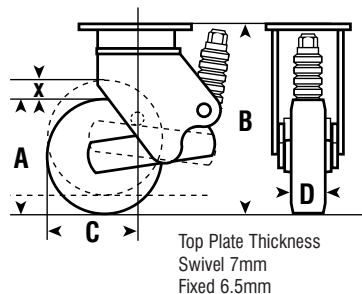
Add suffix **D** to catalogue reference



## SSH-SFH spring series

A	B	C	D	Wheel Type	H mm	Swivel		Fixed		Working Load 						
						Catalogue reference		Catalogue reference		100	200	300	370	490	600	740
5" 125	235	127	40	RUBBER TYRED		SSH 125 RU2H	7.37	SFH 125 RU2H	6.26	KG0	-	-	-	-	-	-
				REVVOHANE		SSH 125 PT2H	7.33	SFH 125 PT2H	6.33	KG0	KG1	KG2	-	-	-	-
6" 150	248	133	45	RUBBER TYRED		SSH 150 RU2H	8.37	SFH 150 RU2H	7.37	KG0	KG1	KG2	-	-	-	-
				REVVOHANE		SSH 150 PT2H	9.38	SFH 150 PT2H	8.58	KG0	KG1	KG2	KG3	KG4	KG5	-
8" 200	273	159	50	RUBBER TYRED		SSH 200 RU2H	8.60	SFH 200 RU2H	7.67	KG0	KG1	KG2	KG3	-	-	-
				REVVOHANE		SSH 200 PT2H	9.77	SFH 200 PT2H	8.83	KG0	KG1	KG2	KG3	KG4	KG5	KG6
Movement to stop X=										25	25	22	22	25	22	25

Based on the H series castor these shock absorbing castors do not use coil springs but one or more stacks of disc springs that are assembled in various combinations to give a wide range of load ratings. The table shows wheel movement and maximum load for good to average conditions.

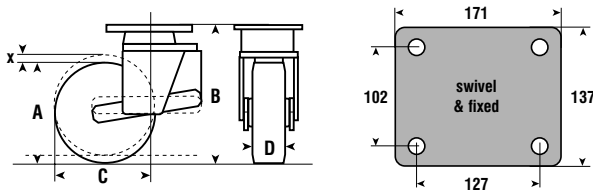


# SSX-SFX

Sprung Suspension Series

A	B	C	D	X	Stop dist.	Tow speed kph	Swivel	Fixed
10" 250	312	230	130	20	350	25	Catalogue reference	Catalogue reference
					450	20	SSX 250 DW2X XS3	SFX 250 DW2X XS3
					750	10	SSX 250 DW2X XS9	SFX 250 DW2X XS9

A castor designed for noise reduction when power towing. Utilising the 'X' series twin taper roller bearing swivel head this castor has an enclosed coil spring suspension and a wide tread wheel with thick demountable rubber tyre



Fixing holes to suit 16mm diameter bolts



# SST-2ST

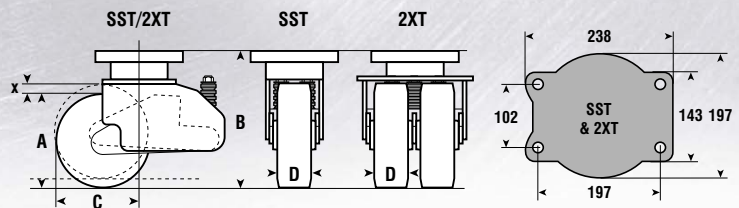
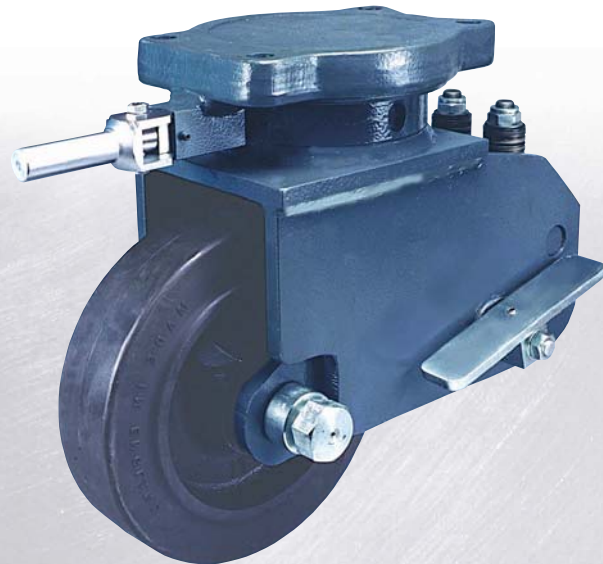
## SST Series: Single wheel

A	B	C	D	X	Stop dist.	Wheel Type	Swivel
10" 250	368	218	75	22	1000	RUBBER TYRED	Catalogue reference
					1100	REVVOTHANE	SST 250 RU2Q KG9
							SST 250 PT2Q KG9

## 2XT Series: Twin wheel

A	B	C	D	X	Stop dist.	Wheel Type	Swivel
10" 250	474	225	75	32	2040	RUBBER TYRED	Catalogue reference
					2120	REVVOTHANE	2XT 250 RU2Q 031
							2XT 250 PT2Q 031

Single or twin wheel castors with 'T' series swivel head and suspension by disc springs. Available with direction lock and a footbrake which can be operated by pedals on both sides of the castor. Max towing speed 4kph.

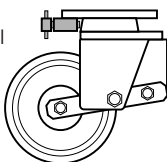


Fixing holes to suit 16mm diameter bolts

### DIRECTIONAL LOCK (D)

A four-station plunger lock converting swivel castors into fixed for straight line travel.

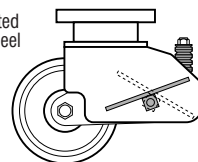
Add suffix **D** to catalogue reference



### FOOTBRAKE (B)

The foot operated pedal locks wheel

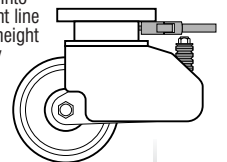
Add suffix **B** to catalogue reference



### DIRECTIONAL LOCK (D)

A four-station plunger lock converting swivel castors into fixed for straight line travel. Overall height is increased by 37mm

Add suffix **D** to catalogue reference



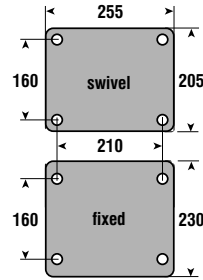
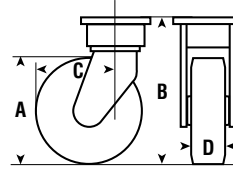


# TSY-TFY series

Heavy duty castors loads up to 6700kg

A	B	C	D	Wheel Type	Swivel	Fixed
				REVVOHANE		
16"400	550	320	125	6700	TSY 400 PT3Z	TFY 400 PT3Z
					125.0	82.0

Kingpinless swivel bearing with two large diameter hardened ball bearing raceway. Revvothane 'Vulkollan'® tyre moulded onto cast iron centre



TSY/TFY top plates have fixing holes to suit 20mm diameter bolts

Top plate thickness  
swivel 28mm  
Fixed 25mm

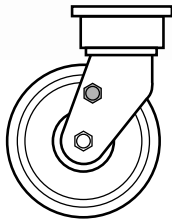


### WHEEL LOCK (W)

Swivel castors only

A simple parking lock

Add suffix **W** to catalogue reference

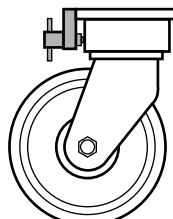


### DIRECTIONAL LOCK (D)

Swivel castors only

A four-station plunger lock converting swivel castors into fixed for straight line travel

Add suffix **D** to catalogue reference



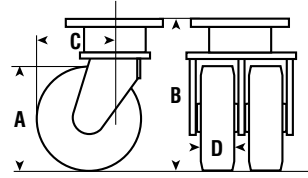
TEL +31(0)318 536611

# 2SZ-2FZ

Twin wheel heavy duty castors loads up to 11,400kg

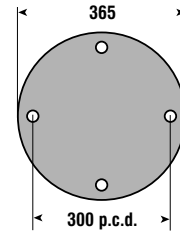
A	B	C	D		Wheel Type		Swivel	Fixed
16"	400	570	350	125	11400	REVVOHANE	Catalogue reference	Catalogue reference
							2SZ 400 PT3Z	220.0 2FZ 400 PT3Z

Kingpinless swivel bearing with two large diameter hardened ball bearing raceways. Twin wheels tyred with high performance Revvothane 'Vulkollan'® material.



2SZ top plates have fixing holes to suit 24mm diameter bolts

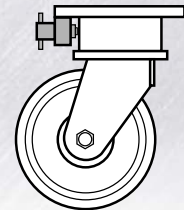
Top plate thickness 33mm



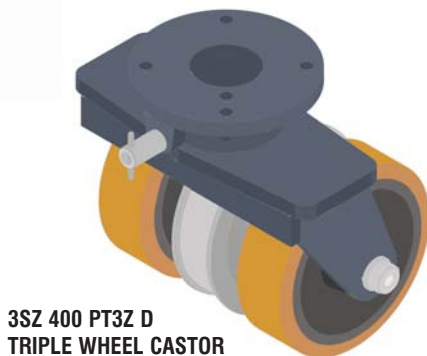
## DIRECTIONAL LOCK (D)

A eight-station plunger lock converting swivel castors into fixed for straight line travel

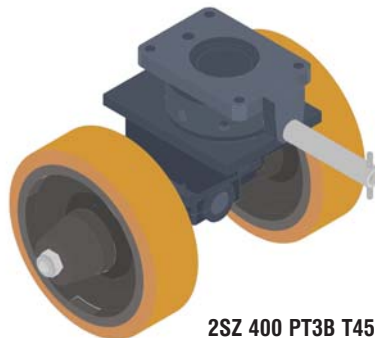
Add suffix **D** to catalogue reference



OTHER SPECIAL CASTORS AVAILABLE. EXAMPLES BELOW. PLEASE ASK FOR DETAILS.



3SZ 400 PT3Z D  
TRIPLE WHEEL CASTOR



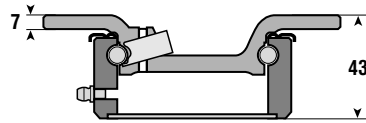
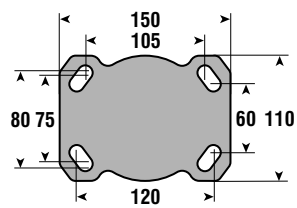
2SZ 400 PT3B T45 DW PA  
PIVOT AXLE CASTOR


TEL +31 (0)318 536611

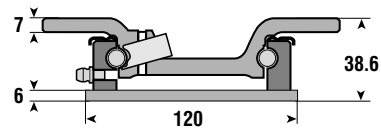
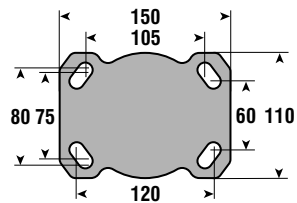



# Swivel heads

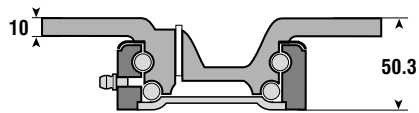
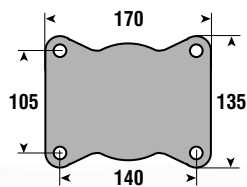
A selection of swivel heads from our castor range




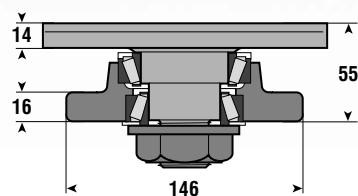
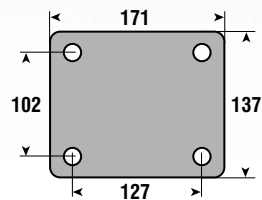
	Catalogue reference
1500	<b>ASH-Z</b>




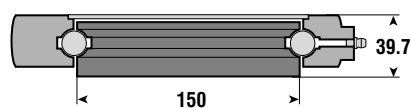
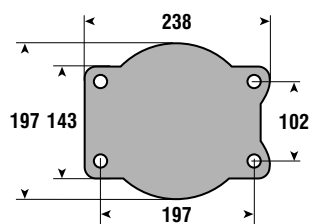
	Catalogue reference
1500	<b>WSH-Z</b>




	Catalogue reference
2000	<b>TSP</b>



	Catalogue reference
2750	<b>TSX</b>



	Catalogue reference
5000	<b>TST</b>

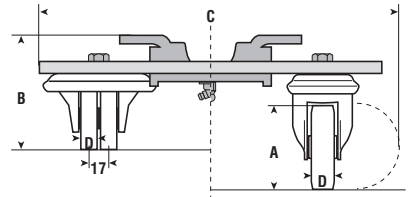


TEL +31 (0)318 536611

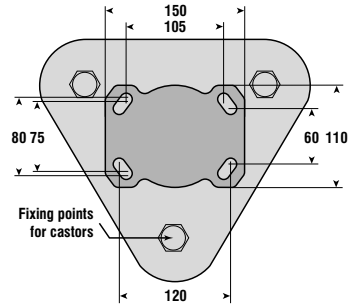


# Scene-shifter

Utilising the 'H' series swivel head and either 2SL or BS4 castors, the scene-shifter has applications in Theatres, Conference Centres and Exhibition Halls



Type A: fitted with 2SL Series castors  
Type B: fitted with BS4 Series castors



When fitting at 120 x 60mm hole centres use 12mm diameter bolts  
When fitting at 105 x 80/75mm hole centres use 10mm diameter bolts

## Type A: Scene Shifter fitted with low-level 2SL Series twinwheel castors

A	B	C	D		Wheel type	Catalogue reference	
	Overall height	Swivel diameter					
2" 50	96	308	14	360	NYLON	2SL 050 NY0L X	7.0
			14	360	REVVOTHANE	2SL 050 PTOL X	8.0

## Type B: Scene Shifter fitted with BS4 Series castors

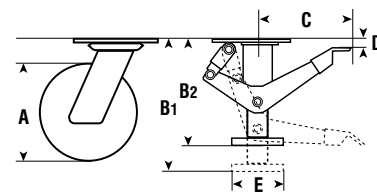
A	B	C	D		Wheel type	Catalogue reference	
	Overall height	Swivel diameter					
4" 100	168	436	35	460	NYLON	BS4 100 NY04 X	8.0
			35	460	NYLON	BS4 100 NY14 X	8.0
			35	300	RUBBER TYRED	BS4 100 RU04 X	11.0
			29	460	REVVOTHANE	BS4 100 PT04 X	11.0
			29	460	REVVOTHANE	BS4 100 PT14 X	11.0
			5" 125	193	464	35	460
35	460	NYLON				BS4 125 NY14 X	9.0
38	360	RUBBER TYRED				BS4 125 RU04 X	12.0
38	360	RUBBER TYRED				BS4 125 RU04 X	12.0
35	405	NYTHANE				BS4 125 NT04 X	9.0
35	405	NYTHANE				BS4 125 NT14 X	9.0
32	460	REVVOTHANE				BS4 125 PT04 X	12.0
32	460	REVVOTHANE				BS4 125 PT14 X	12.0



# Floor Locks & XJP Jacking castor series

Floor Locks - a positive means of securing mobile equipment in position

A	B1	B2	C	D	E	Catalogue reference	
To suit castor with wheel diameter	Mounting height	Retracted height					
4"	100	143	72	20	103	4040-0101	4.000
		150	140	5	80	4040-0206	2.000
6"	150	210	145	8	80	4040-0207	2.000



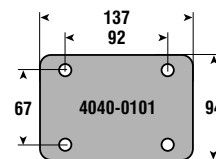
## XJP Jacking castor series

A	B	C	D			Swivel	Catalogue reference	
8"	200	635	172	50	535	RUBBER TYRED	XJP 200 RU2H	16.000
			45	1000		REVVOTHANE	XJP 200 PT2H	16.000

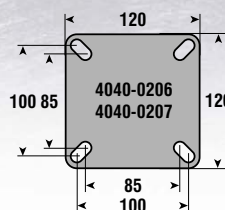
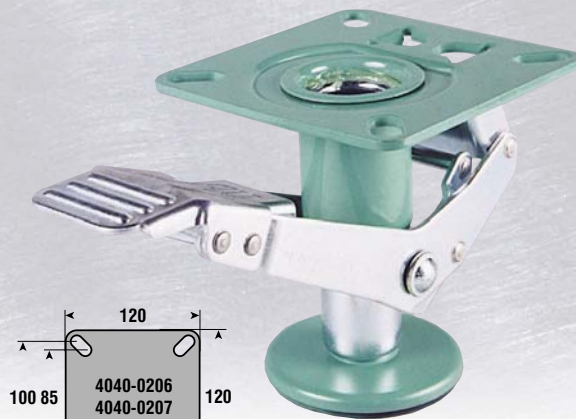
Jacking castor with easy and accurate vertical adjustment.



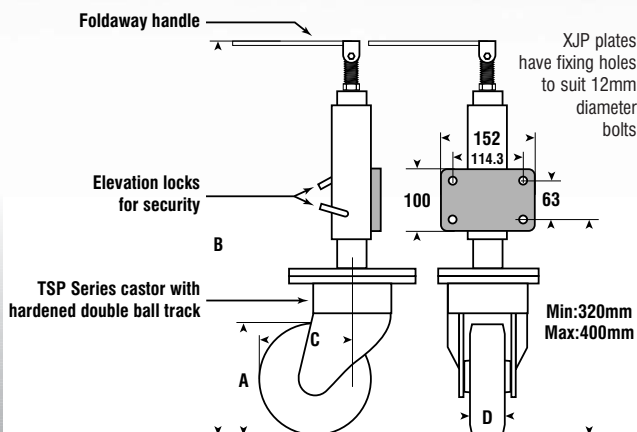
4040-0101



Floor lock top plates have fixing holes to suit 10mm diameter bolts



4040-0206  
4040-0207



TEL +31 (0) 318 536611



**Flexello**



We at Colson Europe are pleased to be able to offer you selected Revvo & Flexello castors, wheels, jacking castors, truck locks and tow trailer castors alongside our Colson ranges.

Flexello castors





# KV-KVF series

Heavy duty fabricated castors loads up to 1600kg.

### KV series

Tapered roller and ball bearing swivel castors.  
(Conforms to ISO 2184, Class 4)

### KVF series

Matching fixed castors. Load capacity up to 1600kg per castor.

### 2-Way Directional Lock

(Available on 150, 200 and 250mm dia. swivel castors except those with 76mm wide tread wheel).

Converts swivel castors to a fixed castor by the release of a spring loaded plunger. The locked direction of travel is in line with the longer side of the top plate.

Add suffix 'L' to castor code.

### Combined Swivel and Wheel Lock

Provides positive locking of both the swivel head and the wheel in any position. The spring loaded plunger released by light hand or foot pressure on the lever automatically engages both locks.

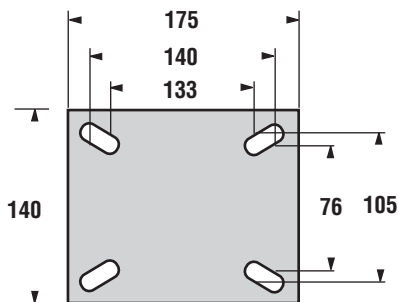
Available on the following castors

KV 8SUBM4CWL

KV 8SUBCWL

KV 10SUBM4CWL

Not available with any adaptations.



Standard Top Plate M4

# KV-KVF series

Heavy duty fabricated castors loads up to 1600kg.

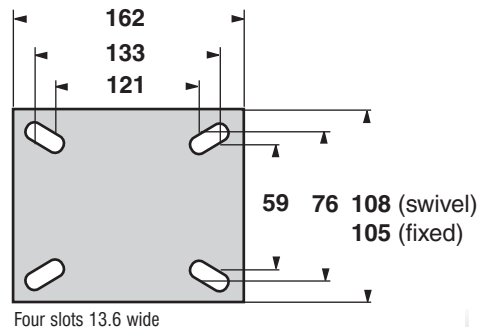
A	B	C	D	E	Wheel Type	F	Swivel		Fixed	
							Swivel	Fixed	Swivel	Fixed
6" 150	213	134	45	400	RUBBER TYRE	III	KV 6RTBM4	KVF 6RTBM4		
					RUBBER TYRE	II	KV 6RTBJM4	KVF 6RTBJM4		
					SUPERTHANE	III	KV 6SUBM4	KVF 6SUBM4		
					SUPERTHANE	II	KV 6SUBJM4	KVF 6SUBJM4		
					SUPERTHANE	III	KV 6SUTMM4	KVF 6SUTMM4		
					SUPERTHANE	II	KV 6SUTJM4	KVF 6SUTJM4		
8" 200	264	162	51	585	RUBBER TYRE	III	KV 8RTBM4	KVF 8RTBM4		
					RUBBER TYRE	II	KV 8RTBJM4	KVF 8RTBJM4		
					SUPERTHANE	III	KV 8SUBM4	KVF 8SUBM4		
					SUPERTHANE	II	KV 8SUBJM4	KVF 8SUBJM4		
					SUPERTHANE	III	KV 8SUTMM4	KVF 8SUTMM4		
					SUPERTHANE	II	KV 8SUTJM4	KVF 8SUTJM4		
10" 250	314	188	51	680	RUBBER TYRE	III	KV 10RTBM4	KVF 10RTBM4		
					RUBBER TYRE	II	KV 10RTBJM4	KVF 10RTBJM4		
					SUPERTHANE	III	KV 10SUBM4	KVF 10SUBM4		
					SUPERTHANE	II	KV 10SUBJM4	KVF 10SUBJM4		
					SUPERTHANE	III	KV 10SUTMM4	KVF 10SUTMM4		
					SUPERTHANE	II	KV 10SUTJM4	KVF 10SUTJM4		
12" 300	365	210	57	750	RUBBER TYRE	III	KV 12RTBM4	KVF 12RTBM4		
					RUBBER TYRE	II	KV 12RTBJM4	KVF 12RTBJM4		
					SUPERTHANE	III	KV 12SUBM4	KVF 12SUBM4		
					SUPERTHANE	II	KV 12SUBJM4	KVF 12SUBJM4		
					SUPERTHANE	III	KV 12SUTMM4	KVF 12SUTMM4		
					SUPERTHANE	II	KV 12SUTJM4	KVF 12SUTJM4		



### KV and KVF Series with Alternative Top Plate

KV and KVF Series castors are available with top plates conforming to our previous dimensions.

To order delete M4 from castor code.



# EH-EHF series

Extra heavy duty fabricated castors loads up to 7 tonnes

### EH series

Tapered roller bearing swivel castors.

### EHF series

Matching fixed castors. Load capacity up to 7025kg per castor.

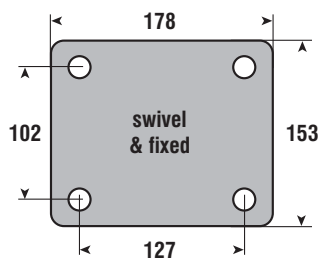
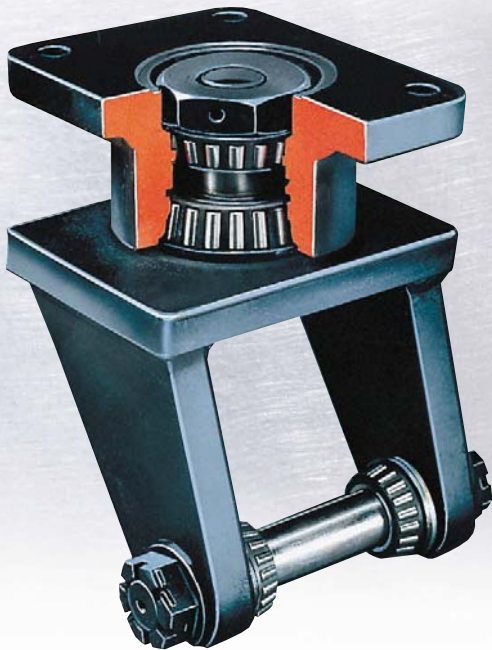
### 2-Way Directional Lock

(Swivel castors only). Converts swivel castors to fixed castors by the release of a spring loaded plunger. The locked direction of travel is in line with the longer side of the top plate.

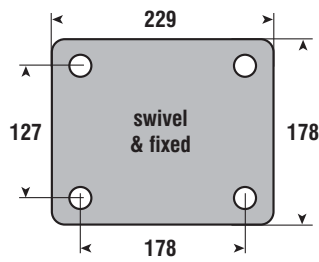
### Shock Absorbing Castors

The castors are rated at 2000kg for Ideal Working Conditions. The spring rate is chosen to keep wheel 'bounce' to an absolute minimum and provide stable platform for quick transfer of loaded pallets from trailer to deck and vice versa.

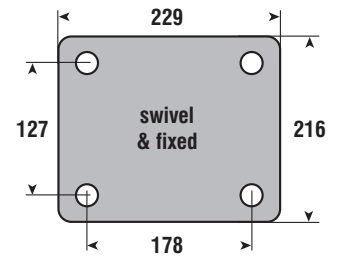
- EH-210HCTML
- EH-210SUTML
- EH-212SUTML
- EH-312SUTML
- EH-312RTTML
- EH-510HCTML
- EH-516SUTML



Use 16mm diameter bolt (up to 312)



Use 20mm diameter bolt (EH 510/516)



Use 20mm diameter bolt (EHF 510/516)



# EH-EHF series

Extra heavy duty fabricated castors loads up to 7 tonnes

A	B	C	D	E	Wheel Type	F	Swivel		Fixed	
							G	H	I	J
8" 200	305	172	76	1270	SUPERTHANE	EH	EH 108 SUTM	EHF 108 SUTM		
10" 250	356	197	76	2270	SUPERTHANE	EH	EH 110 SUTM	EHF 110 SUTM		
6" 150	264	146	70	3270	CAST IRON	EH	EH 306 HCTM	EHF 306 HCTM		
10" 250	368	197	76	2950	SUPERTHANE	EH	EH 210 SUTM	EHF 210 SUTM		
			76	3270	CAST IRON	EH	EH 310 HCTM	EHF 310 HCTM		
12" 300	422	222	76	2950	SUPERTHANE	EH	EH 212 SUTM	EHF 212 SUTM		
12" 300	422	222	102	4080	SUPERTHANE	EH	EH 312 SUTM	EHF 312 SUTM		
			240	102	2000	RUBBER TYRE	EH	EH 312 RTTM40	EHF 312 RTTM40	
10" 250	400	210	102	7025	CAST IRON	EH	EH 510 HCTM	EHF 510 HCTM		
16" 400	552	286	127	6120	SUPERTHANE	EH	EH 516 SUTM	EHF 516 SUTM		



## Towtrailers

### Twin wheel pivoting axle castors for loads up to 6 tonnes

Developed to further enhance the range of EH and EHF swivel and fixed castors, these castors are designed to meet the high load capacity and speed requirements of cargo dollies and industrial and freight handling trailers.

The combination of high load and the speed and distance of operation, imposes the need for a heavy section to give the necessary level of performance. However, for operational reasons and to conform to international standards, trailer deck heights are restricted. limiting choice of wheel.







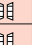

The 'Towtrailer' system uses swivel and matching fixed castors, which have wheels in pairs on an offset axle pivoting at its midpoint. The design incorporates a frictional dampening system which eliminates the 'wheel patter' which occurs with a free pivoting axle. This protects the system from the high impact forces which can result in damage and premature failure.

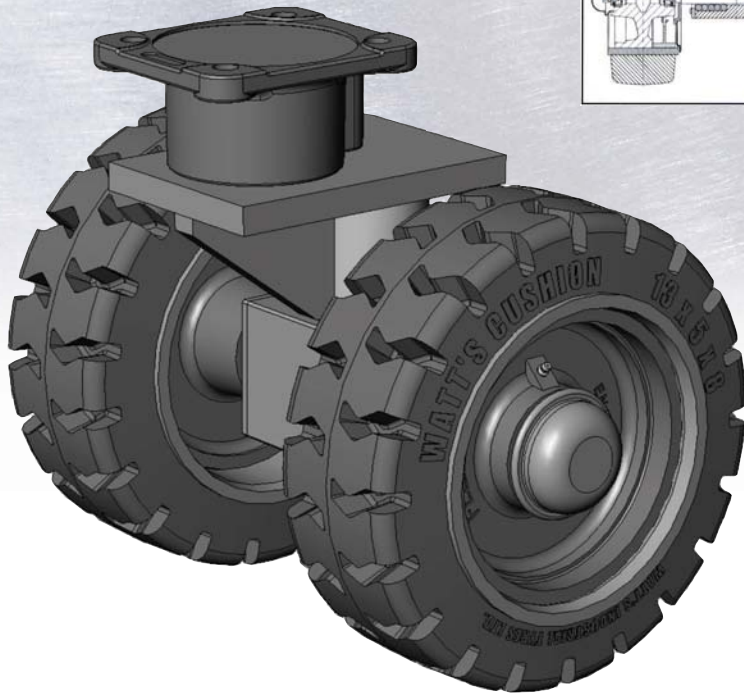
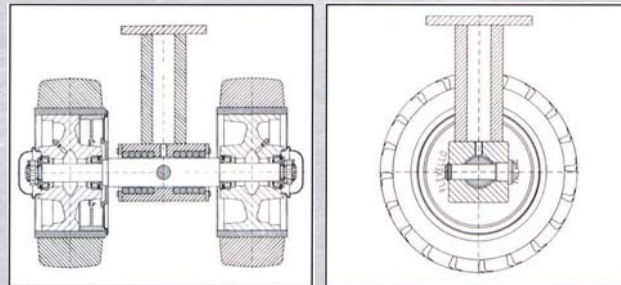
The combination of the frictional dampening and the resilience of the cushion tyres minimises the transmission of shock loads and vibration to the cargo. The standard twin wheel pivoting axle system is designed for gross loads up to 6 tonnes, and operates at speeds up to 15 kph. The swivel castors utilise the EH 3 tonne capacity swivel head with opposed taper roller bearings and a 125mm offset pivoting axle with integral hubs to mount the twin detachable resilient cushion tyred wheels.

The matching fixed castors have a similar offset pivoting axle with integral hubs, incorporating single cable operated drum brakes and twin detachable resilient cushion tyred wheels.

The Towtrailer system is designed for power towing at speed but the design also permits the ready handling of empty trailers on a manual basis.

#### 6 Tonnes Nominal Trailer System

A	B	C	D			Catalogue reference
						
330	422	350	127	1500		EH 213 CTTMTW
	422	350	127	1500		EHF 213 CTTMTWBR



# JA series

Heavy duty fabricated jacking castors loads up to 2500kg.

## Jacking Castors with 76mm Lift

Load capacity up to 1090kg per castor.

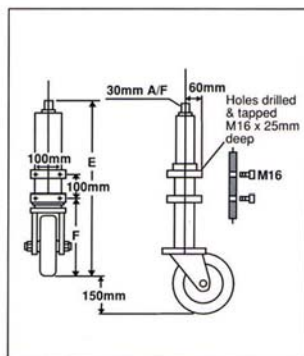
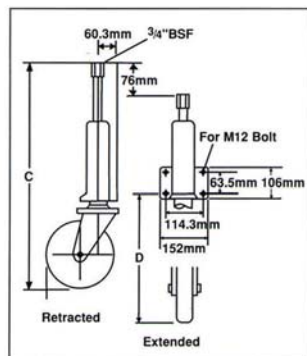
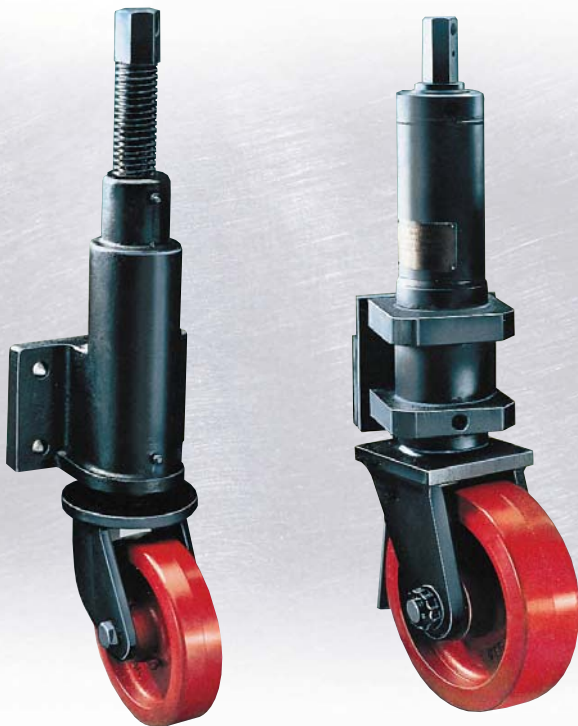
Flexello jacking castors facilitate movement and quick and accurate vertical adjustment of working platforms, machines, etc.

## Jacking Castors with 150mm Lift

Load capacity up to 2500kg per castor.

150mm lift jacking castor with a 250mm diameter wheel and 2-way directional lock (with direction of travel at 90° to the vertical fixing plate).

A	B	C	D	Wheel Type	Swivel	Catalogue reference
6" 150	**	**	45	400	RUBBER TYRE	JA 6RTB
			45	725	SUPERTHANE	JA 6SUB
			45	1020	CAST IRON	JA 6CIB
8" 200			51	585	RUBBER TYRE	JA 8RTB
			51	1045	SUPERTHANE	JA 8SUB
			51	1090	CAST IRON	JA 8CIB
10" 250			76	2500	SUPERTHANE	JA 210 SUTML



# TLCH-TLCM series

Truck locks.

## TLCH series

Top plate fitting truck lock.

The TLCH truck lock is designed to bolt to the underside of the truck and should be mounted with its top face 200mm above the ground surface.

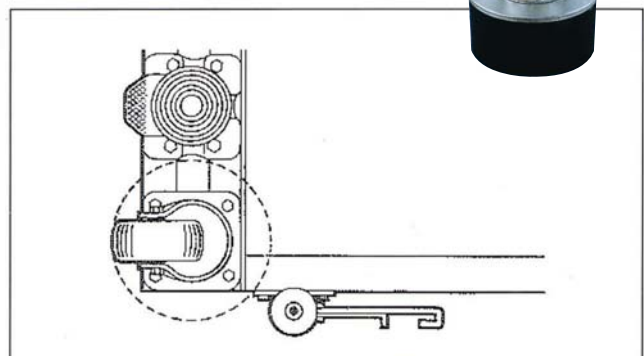
## TLCM series

Side plate fitting truck lock.

The TLCM truck lock is designed to be bolted to the side or end of the truck, the holes being drilled to suit by the customer. Four 10mm clearance holes are suggested, the top pair being up to 353mm and the lower pair not less than 226mm above the ground.

Description	Image 1	Image 2	Image 3	Overall height free position mm	Overall height pad extended mm	Catalogue reference
Top plate	152 x 114	127 x 63.5	12	163.5	208	TLCH

Description	Image 1	Image 2	Overall height free position mm	Overall height pad extended mm	Catalogue reference
Side plate, lever at right	165 x 114	Drilled by customer	346	381	TLCMR
Side plate, lever at left	165 x 114	Drilled by customer	346	381	TLCML





# WRT series

Rubber tyred, cast iron wheel loads up to 2000kg.

## WRT Series

Rubber tyred, cast iron wheel. Heavy duty – plain, roller, ball journal or tapered roller bearing.



A	B	C	D			Catalogue reference
4" 100	43	48	15	160		WRT 4RBM15
5" 125	38	48	15	180		WRT 5M15
	38	48	15	180		WRT 5RBM15
6" 150	45	60	20	400		WRT 6M20
	45	60	20	400		WRT 6RBM20
	45	60	25	400		WRT 6RBM25
	45	60	25.4	400		WRT 6L
	45	60	25.4	400		WRT 6LRB
	45	61	12	400		WRT 6BJM12 †
	45	57	20	400		WRT 6BJM20*
	45	57	25	400		WRT 6BJM25*
8" 200	51	60	20	585		WRT 8M20
	51	60	20	585		WRT 8RBM20
	51	60	25	585		WRT 8RBM25
	51	60	25.4	585		WRT 8L
	51	60	25.4	585		WRT 8LRB
	51	61	12	585		WRT 8BJM12 †
	51	57	20	585		WRT 8BJM20*
	51	57	25	585		WRT 8BJM25*
10" 250	51	60	25	680		WRT 10RBM25
	51	60	25.4	680		WRT 10RB
	51	60	31.8	680		WRT 10LRB
	51	61	12	680		WRT 10BJM12 †
	51	57	25	680		WRT 10BJM25*
12" 300	57	60	25	750		WRT 12RBM25
	57	60	25.4	750		WRT 12RB
	57	60	31.8	750		WRT 12LRB
	57	61	12	750		WRT 12BJM12 †
	57	57	25	750		WRT 12BJM25*

\* Spacer washers are available to increase hub width to 60mm.

† 12mm ball journal wheels are desinged to bolt directly into Flexello castors.

## WRT/TM Series (Not shown)

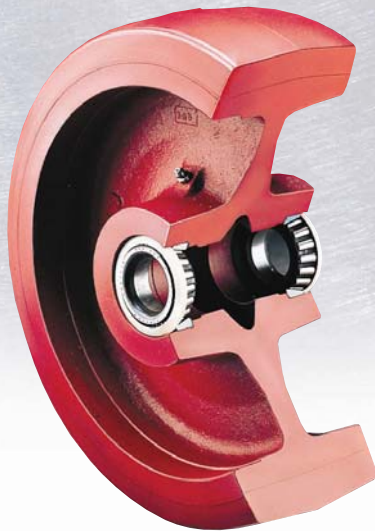
A	B	C	D			Catalogue reference
12" 300	102	118	31.8	2000		WRT 312TM40

# WSU series

Superthane-polyurethane tyred, cast iron centred wheel loads up to 6120kg.

## WRT Series

Superthane-polyurethane tyred, cast iron centred wheel. Heavy duty – plain, roller, ball journal or tapered roller bearing.



A	B	C	D				Catalogue reference
3" 75	29	39	12	150			WSU 3M12
4" 100	43	48	15	295			WSU 4RBM15
5" 125	35	48	15	325			WSU 5RBM15
	35	50	25	325			WSU 5RBM25
	35	50	25.4	325			WSU 5LRB
6" 150	38	60	20	600			WSU 61RBM20
	45	60	20	725			WSU 6RBM20
	45	60	25	725			WSU 6RBM25
	45	60	25.4	725			WSU 6LRB
	45	61	12	725			WSU 6BJM12
	45	57	20	725			WSU 6BJM20 †
	45	57	25	725			WSU 6BJM25 †
	45	62	12.7	725			WSU 6TM
8" 200	51	60	20	1045			WSU 8RBM20
	51	60	25	1045			WSU 8RBM25
	51	60	25.4	1045			WSU 8LRB
	51	61	12	1045			WSU 8BJM12
	51	57	20	1045			WSU 8BJM20 †
	51	57	25	1045			WSU 8BJM25 †
	51	62	12.7	1045			WSU 8TM*
	76	92	25	1270			WSU 83BJM25
	76	106	12.7	1270			WSU 83TM*
	76	92	19.1	1270			WSU 108TM
10" 250	51	60	25	1135			WSU 10RBM25
	51	60	25.4	1135			WSU 10RB
	51	60	31.8	1135			WSU 10LRB
	51	61	12	1135			WSU 10BJM12
	51	57	25	1135			WSU 10BJM25 †
	51	62	12.7	1135			WSU 10TM*
	76	106	12.7	2270			WSU 103TM*
	76	92	19.1	2270			WSU 110TM
	76	92	31.8	2950			WSU 210TM
	76	95	38.1	2950			WSU 210RB
12" 300	57	60	25	1270			WSU 12RBM25
	57	60	25.4	1270			WSU 12RB
	57	60	31.8	1270			WSU 12LRB
	57	61	12	1270			WSU 12BJM12
	57	57	25	1270			WSU 12BJM25 †
	57	62	12.7	1270			WSU 12TM
	76	92	31.8	2950			WSU 212TM
	76	95	38.1	2950			WSU 212RB
	102	118	31.8	4080			WSU 312TM
16" 400	127	143	34.9	6120			WSU 516TM

† Spacer washers are available to increase hub width to 60mm.

\* These wheels are fitted with taper roller bearings for use in KV and KVF castors and have axle tubes to reduce the bore from the 3/4" of the inner component of the taper roller bearing to the 12mm diameter of the High Tensile axle bolt used on all KV and KVF Series castors.

Flexello-Superthane wheels combine the load capacity and wear resistance of cast iron with all the advantages of a soft resilient tread. High load capacity is coupled with a comparatively low tractive resistance. The tear strength is 2 to 5 times greater than that of natural rubber and the high abrasion resistance ensures a life which exceeds a rubber tyre by over 10 times.

# WCI-WGR-WHC series

Hard tread wheels.

## WCI Series

Cast iron wheel. Heavy duty – plain or roller bearing.  
Load capacity 1360kg per castor.

## WGR Series

Grooved cast iron wheel. Heavy duty – roller bearing.  
Load capacity 1020kg per castor.

## WHC Series

Extra duty cast iron wheel. Heavy duty – tapered roller bearing.  
Load capacity 7025kg per castor.



## WCI Series

	A	B	C	D			Catalogue reference
2"	50	22	27	6.4	61		WCI 20
2 1/2"	63	25	33	9.5	122		WCI 25
3"	75	32	40	12	170		WCI 3M12
4"	100	38	48	15	450		WCI 4M15
	100	38	48	15	450		WCI 4RBM15
5"	125	41	48	15	630		WCI 5M15
	125	41	48	15	630		WCI 5RBM15
6"	150	45	60	20	1180		WCI 6M20
	150	45	60	20	1180		WCI 6RBM20*
	150	45	60	25.4	1180		WCI 6L
8"	200	45	60	20	1270		WCI 8M20
	200	45	60	20	1270		WCI 8RBM20*
	200	45	60	25	1270		WCI 8RBM25
	200	45	60	25.4	1270		WCI 8L
10"	250	51	60	25	1360		WCI 10RBM25
	250	51	60	25.4	1360		WCI 10RB

\* For high temperatures these wheels can be supplied with steel cage roller bearings. Add suffix 'HT' to castor code.

## WGR Series

	A	B	C	D			Catalogue reference
6"	150	48	60	20	1020		25 x 90° WGR 6RBM20

## WHC Series

	A	B	C	D			Catalogue reference
6"	150	70	92	31.8	3270		WHC 306TM
10"	250	76	92	31.8	3270		WHC 310TM
	250	102	148	34.9	7025		WHC 510TM